

# John Cook Taylor & Emma Jane Owens



Linda F. McCauley  
PO Box 1751, Mt. Vernon, Kentucky 40456  
[www.documentingthedetails.com](http://www.documentingthedetails.com)  
[linda@lfmccauley.com](mailto:linda@lfmccauley.com)  
4 Feb 2022

# Table of Contents

John Cook Taylor & Emma Jane Owens	2
Grace Taylor	9
Susan Taylor	11
William Robert Taylor	18
Emma Ewers Taylor	25
Hartford Conn Taylor	40
Anna Rose Taylor	43

Photos included in this document and more are available to download at <https://lfmccauley.smugmug.com/Hopkins-Taylor-Photos/John-Emma/>.

Copyright © 2022 Linda F. McCauley. All rights reserved.

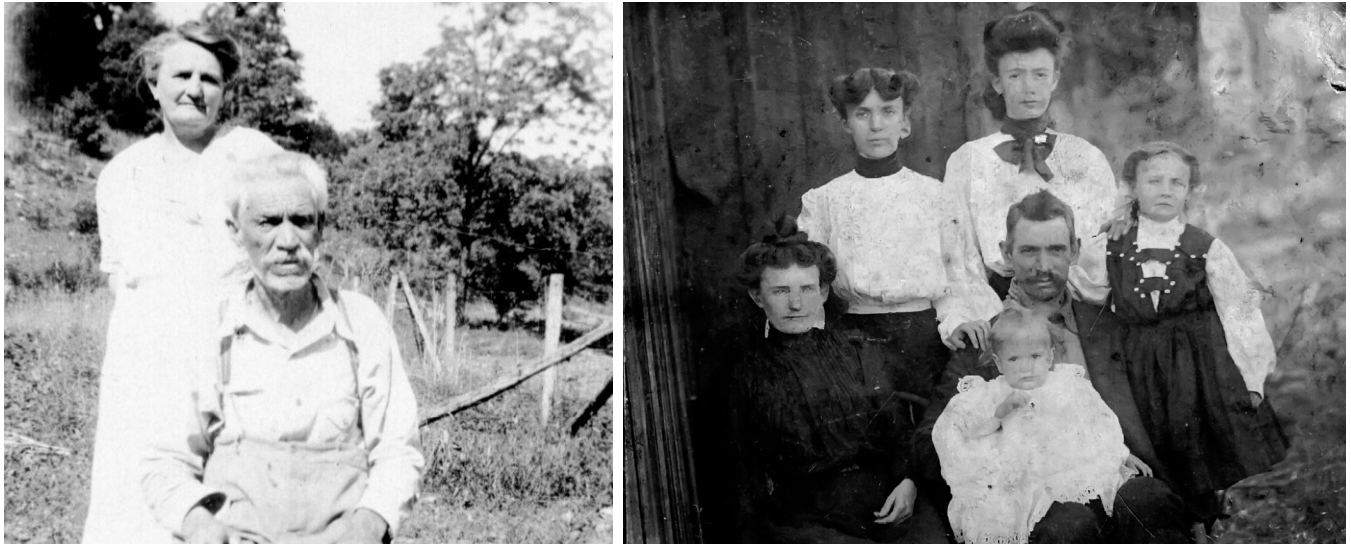
## Terms of Use

The purpose of this document is to share family history research I have conducted with family members and others with a connection to the family. This document is free to download for personal use and sharing with others by anyone with a connection to the family. If you find errors or have questions, please contact [linda@lfmccauley.com](mailto:linda@lfmccauley.com).

Downloading this document or otherwise copying the information constitutes agreement to these terms of use.

1. Users may not modify, edit, or create derivative works of this document.
2. Users may not re-publish or re-produce this document without written permission from the author. That includes copying content to blogs, websites, and online family trees.
3. Users may not remove the terms of use and copyright information from this document and its contents may not be copied to another media with those items excluded.

# John Cook Taylor and Emma Jane Owens



Left: Emma Jane & John; Right: Front-Emma Jane, John holding Hartford, Back-Gracie, Susie, Emma

John and Emma Jane were both born in Rockcastle County, Kentucky, and lived there their entire lives. John may have only left the county once—for a visit with their son, Hartford, in Chicago, Illinois. Emma Jane traveled a little more, visiting their daughter Emma and her family in Loyall, Kentucky, and also visiting Hartford and his family.

John Cook Taylor was born on 25 December 1863 near Renfro Valley.<sup>1</sup> He was the fourth of James Francis Taylor and Margaret E. Ramsey's eleven children. His siblings were William Thomas, Josiah L., Martha Ann, Rhoda Nell, Margaret Lou, Robert Burke, Milton, Alford, Sue, and Nannie.<sup>2</sup>

The Taylors lived on what is now Old Highway 25 Loop 6. It was the main road in those days but only a small stretch remains today. That stretch runs parallel to US Highway 25, starting north of the intersection of Highways 461 and 25 and dead-ending at I-75. Their house was behind where Wendy's and KFC are today. That entire area on both sides of Highway 25 was their farm.<sup>3</sup>

Emma Jane Owens was born on 16 April 1882 in the Freedom community.<sup>4</sup> She was the youngest of Madison Crawford Owens and Cecilia Owens's seven children.<sup>5</sup> Most of her siblings were much older than her. Elizabeth married and had a child before Emma Jane was born.<sup>6</sup> Siblings Sally and George were both married before she was six years old.<sup>7</sup> Another sister died as an infant before Emma Jane was born.<sup>8</sup> For most of her childhood, only brothers Wesley Alfred and William David, ten and seven years older than her, were at home with Emma Jane and their parents.<sup>9</sup>

John married Sarah A. "Sally" Ramsey, daughter of Goldman P. Ramsey and Serena Green, on 8 June 1885.<sup>10</sup> John and Sally had two daughters—Grace born on 27 August 1886 and Susan born on 3 February 1889.<sup>11</sup> Sally was about twenty-four years old when she died on 12 February 1892.<sup>12</sup>

On 22 August 1894, John married Margaret F. "Fannie" Warren.<sup>13</sup> Fannie, the daughter of Fielden L. Warren and Jane Keeney, was born on 21 March 1876 in Rockcastle County.<sup>14</sup> Their son William Robert was born on 16 May 1895 and their marriage ended in divorce on 16 February 1898.<sup>15</sup> John's daughter Emma

and Bill in later life told that John chased after the wagon, begging Fannie not to take his son away but could not stop her.

John and Emma Jane married on 16 January 1900 at her parents' home at Freedom.<sup>16</sup> Emma Jane was seventeen years old when she became step-mother to thirteen-year-old Gracie and ten-year-old Susie.<sup>17</sup> The three of them were close for the rest of their lives.<sup>18</sup>

John and Emma Jane started their marriage in a house on West Main Street near Fairground Hill in Mt. Vernon.<sup>19</sup> Their daughter Emma Ewers was born in that house on 24 October 1900.<sup>20</sup> John ran a blacksmith shop in Mt. Vernon on Spring Street. Their son, Hartford Conn, was born on 11 April 1905.<sup>21</sup>

On 6 December 1906, they bought a two-story house on Main Street, near Elmwood Cemetery, in Mt. Vernon from R. B. And Emma Mullins.<sup>22</sup> They sold this property on 11 November 1910 to A. B. Furnish and moved back to West Main Street.<sup>23</sup> This house was near, but across the street from, their first home.<sup>24</sup> Susie married August Krueger in this house on 11 September 1911.<sup>25</sup> In 1917, they sold that property to Tom Penicks and moved to a brick two-family house, known as "the Krueger bricks," on West Main Street.<sup>26</sup> The Krueger bricks were down the street from Susie and her husband's family owned them. Their next move was to a house on Crawford Street, behind what is now the Rockcastle County Board of Education. That house burned to the ground while they were living there.<sup>27</sup>

After the fire, John, Emma Jane, Emma, and Hartford stayed with Susie and her family at their house on West Main Street, then moved back to the Krueger bricks. While living there, their third child, Anna Rose, was born on 10 June 1918 and daughter Emma eloped with Elmer Dennis Hopkins to Jellico, Tennessee on 11 October 1920.<sup>28</sup>

John sold the blacksmith shop and, on 29 December 1921, bought a small, forty-acre farm about a mile from town on Buckeye Road.<sup>29</sup> They had chickens, cows, horses, and goats and raised a big garden. John was happy on the farm, but for reasons unknown, they sold it on 15 November 1927 and again moved in with Susie.<sup>30</sup> It is unclear if they lived with Susie the entire time between 1927 and their next documented move in 1932. It is possible that they again lived in one of the Krueger bricks part of that time.

Their son, Hartford, married Elizabeth Josephine Mulliner on 9 November 1928 in Galesburg, Knox County, Illinois.<sup>31</sup> Hartford was a musician. In the early 1930s, he moved to Chicago, where he performed on the WLS barn dance and the WJJD supper time frolic.<sup>32</sup>

On 18 December 1932, John and Emma Jane's son-in-law Elmer bought a small farm near the one they sold in 1927.<sup>33</sup> John, Emma Jane, Gracie, and Anna Rose moved there. Like most, if not all, other places they had lived, the house on this farm did not have electricity or running water. They had a spring, which supplied drinking water and kept butter and milk cool. They caught rainwater for laundry. Emma Jane would build a fire under a big pot of rainwater and stir their clothes and linens with a big paddle that John made for her. She did not have a clothesline, so everything was hung on the fence.<sup>34</sup>

The house was small, only four rooms. The kitchen ran across most of the back of the house. It had a cabinet, a washstand, a wood/coal stove, and a table. The table had several chairs and a bench with storage under the seat. A bucket of water with a dipper that everyone drank from was always on the washstand, along with a bowl. A small room off the kitchen served as Gracie's bedroom. It was the only room in the house with a door.<sup>35</sup>

The two front rooms were open to each other and the kitchen. Each room had a door to the front porch, which ran most of the length of the house. One room had a leather couch that made a bed, a chest of drawers, a crank-style Victrola, and an iron bed. The other room had two beds, a warm morning stove, a

library table, and a sewing machine. They also had several straight-back chairs and rockers that were used in both the front rooms and on the porch, where the family often gathered.<sup>36</sup>

The house had no closets, but Emma Jane put up poles in the corners to hang clothes and hung a drape in front of them. The floors were covered with linoleum.<sup>37</sup>

John kept a few cows, goats, pigs, and chickens. He also had a couple of horses that he used for plowing and to pull a wagon. He raised a big garden and Emma Jane canned enough vegetables to last them until the next year's garden. They often had a dog that started out belonging to their granddaughter Faye, then coming to live on the farm when Faye's parents could talk her into that.<sup>38</sup>

John played the fiddle and sang. Some of his favorite songs were "Cripple Creek," "Shortening Bread," "Turkey in the Straw," and hymns. His hair turned gray early, but he still had a thick head of wavy hair when he died.<sup>39</sup>

Emma Jane was a great cook, even though she never owned a cookbook and only had a wood cook stove. Her daughter, Emma, had a long list of favorite foods that her mother cooked, including biscuits, fried chicken, gravy, fried apples, cornbread, and chowchow. She churned her own butter and made cottage cheese, and she made pies and jam with wild blackberries the girls picked.<sup>40</sup> She baked pies in the lard can lid.<sup>41</sup>

John's brother, Bob, lived in their parents' old home on a farm just over the hill. It was a few miles by road, but they had a shorter path worn over the hill and took turns making that walk almost every Sunday afternoon.<sup>42</sup>

Elmer bought the Krueger bricks in December 1938.<sup>43</sup> When John's health started failing in the late 1940s, Elmer sold the farm and moved them back to one of the bricks on West Main Street.<sup>44</sup>

Daughter, Anna Rose, married Holt Chesnut on 3 February 1947 in Cook County, Illinois.<sup>45</sup> They lived in Detroit, Michigan for a few years, and then Anna Rose returned to Mt. Vernon with her young son.<sup>46</sup>

One thing Emma Jane and John never agreed on was politics. He was a staunch Republican and she a Democrat. That fact alone shows what an independent woman Emma Jane was. Many women of her time deferred to their husbands in politics. But even though they had been married for twenty years before she gained the right to vote, Emma Jane always voted as she wanted.<sup>47</sup>

John died of uremia and nephritis at home on 7 September 1953 at eighty-nine years old.<sup>48</sup> John and Emma Jane were both members of the First Christian Church, which was just across the street from them on West Main Street.<sup>49</sup> John's funeral was held at the church on 9 September and he was buried in Elmwood Cemetery in Mt. Vernon.<sup>50</sup>

Emma and Gracie continued living together in the bricks on West Main Street.<sup>51</sup> Gracie died on 25 September 1961 at the Rockcastle County Baptist Hospital in Mt. Vernon.<sup>52</sup> Emma Jane and John's son, Hartford, died of a stroke on 17 October 1963 in Illinois.<sup>53</sup>

Sometime in the 1960s, Emma Jane got a television. She enjoyed it very much even though she could hardly hear by that time. When visitors stopped by while she was watching TV, she would explain what was happening on the show. Her explanation rarely had anything to do with the actual plot since she could not hear it. But she was perfectly happy and entertained by the stories she made up to go with what she saw.<sup>54</sup>

Emma Jane always enjoyed having company and visiting with family and friends. A family friend once saw her walking home from a nearby funeral home and stopped to give her a ride. When the friend asked who had died, she told them she did not know. She had just gone to the visitation to see if anyone she knew from out in the country might be there. "Out in the country" meant the Freedom area where she grew up.<sup>55</sup>

A few years before Emma Jane died, her daughter Emma started organizing a party to celebrate her birthday every year. The parties were held at Emma Jane's house and were potluck. Everyone brought a dish and stayed all afternoon. Guests included her daughters, grandchildren, great-grandchildren, and nieces and nephews with their families.<sup>56</sup>

On 17 March 1968, Emma Jane died at the Rockcastle County Baptist Hospital in Mt. Vernon—one month before her eighty-sixth birthday. She had chronic bronchitis for several years and suffered a stroke three days earlier.<sup>57</sup> Reverend Norman Howard, of First Christian Church, officiated her funeral at Cox Funeral Home Chapel on 19 March.<sup>58</sup> Emma Jane was buried in Elmwood Cemetery next to John.<sup>59</sup>



# Endnotes for John Cook Taylor & Emma Jane Owens

1. "Kentucky, U.S., Death Records, 1852–1965," digital image, *Ancestry* (<https://www.ancestry.com/search/collections/1222> : accessed 24 Mar 2008), death certificate no. 23800 (1953), John Cook Taylor; from microfilm 994027–994058, KY Dept. for Libraries and Archives, Frankfort.
2. Emma Ewers Taylor Hopkins, "Our Family History" (KY, Loyall, 1969-1977), scanned copy of fill-in-the-blanks family history privately held by Linda F. McCauley, Mt. Vernon, KY; Linda is Emma's granddaughter; p. 26, Wm Thomas, Josiah L., Margaret Lou, Robert Burke, Rhoda Nell, Milton, Alford, Martha Ann, Sue, Nannie.
3. Uta Faye Hopkins McCauley, daughter of Elmer D. Hopkins and Emma E. Taylor; Faye remembers where the house was because Lou and Bob still lived when they were older.
4. Emma Ewers Taylor Hopkins, "Our Family History" (1969-1977); p. 12.
5. Emma Ewers Taylor Hopkins, "Our Family History" (1969-1977), p. 26.
6. Rockcastle Co., KY, Marriages Minister's Returns, 3:55, Craig-Owens, 1880; microfilm 806410; KY Dept. for Libraries and Archives, Frankfort. "Kentucky, U.S., Death Records, 1852–1965," digital image, *Ancestry* (<https://www.ancestry.com/search/collections/1222> : accessed 29 Jan 2022), death certificate no. 18920 (1955), Joe Matt Craig; from microfilm 994027–994058, KY Dept. for Libraries and Archives, Frankfort; Elizabeth's son born 28 Oct 1881.
7. Rockcastle Co., KY, Marriages Minister's Returns, 3:258, Owens-Hamm, 1888; microfilm 806410; KY Dept. for Libraries and Archives, Frankfort. Rockcastle Co., KY, Marriages Minister's Returns, 3:232, Craig-Owens, 1886; microfilm 806410; KY Dept. for Libraries and Archives, Frankfort.
8. "Kentucky, U.S., Birth Records, 1847–1911," digital image, *Ancestry* (<https://www.ancestry.com/search/collections/1213> : accessed 17 Mar 2008); 1874, female, not named, father Madison C. Owens, mother Celia Owens, Rockcastle Co.; from Kentucky Birth, Marriage and Death Records (1852-1910), microfilm rolls #994027-994058, KY Dept. for Libraries and Archives, Frankfort; born 1 Feb 1874. "Kentucky, U.S., Death Records, 1852–1965," digital image, *Ancestry* (<https://www.ancestry.com/search/collections/1222> : accessed 18 Mar 2008), 1874, female, not named, parents Madison C & Celia Owens; from microfilm 994027–994058, KY Dept. for Libraries and Archives, Frankfort; died 12 Feb 1874.
9. 1900 U.S. census, Rockcastle Co., KY, population schedule, Skeggs Creek, enumeration district (ED) 7, sheet 12B, dwelling 232, family 244, Mat C. Owens; digital image, *Ancestry* (<https://www.ancestry.com/search/collections/7602> : accessed 2 Sep 2008); from NARA microfilm T623, roll 550; Wesley living with parents. Rockcastle Co., KY, Marriage Bonds, 10: 100, Owens-Owens, 1895; microfilm 806413; KY Dept. for Libraries and Archives, Frankfort; Emma was 13 when Dave married.
10. Rockcastle Co., KY, Marriages, 3: 399, Taylor-Ramsey, 1885; Rockcastle Co. Clerk, Mt. Vernon. 1870 U.S. census, Rockcastle Co., KY, population schedule, Voting District #1., p. 12, dwelling 89, family 77, Golman P. Ramsey; digital image, *Ancestry* (<https://www.ancestry.com/search/collections/7163> : accessed 28 Jan 2022); from NARA microfilm M593, roll 497; Sarah A. Living with parents Golman P. And Serena Ramsey. "Kentucky, U.S., Birth Records, 1847–1911," digital image, *Ancestry* (<https://www.ancestry.com/search/collections/1213> : accessed 29 Jan 2022); 1858, Harriett Ramsey, parents Golman Ramsey & Serena Green, Rockcastle Co.; from Kentucky Birth, Marriage and Death Records (1852-1910), microfilm rolls #994027-994058, KY Dept. for Libraries and Archives, Frankfort; Serena's maiden name Green on daughter Harriett's birth record.
11. KY Cabinet for Health and Family Services, death certificate no. 20336 (1961), Gracie Taylor; Office of Vital Statistics, Frankfort. "Kentucky, U.S., Death Records, 1852–1965," digital image, *Ancestry* (<https://www.ancestry.com/search/collections/1222> : accessed 6 Dec 2021), death certificate no. 4246 (1964), Susie Krueger; from microfilm 994027–994058, KY Dept. for Libraries and Archives, Frankfort.
12. 1870 U.S. census, Rockcastle Co., KY, pop. sch., Voting District #1., p. 12, dwell. 89, fam. 77, Golman P. Ramsey; Sarah age 2, estimated birth year 1868. Emma Ewers Taylor Hopkins, "Our Family History" (1969-1977); p. 51, death date.
13. Rockcastle Co., KY, Marriages, 48, 268-269, Taylor-Warren, 1897; Rockcastle Co. Clerk, Mt. Vernon.
14. "Kentucky, U.S., Birth Records, 1847–1911," digital image, *Ancestry* (<https://www.ancestry.com/search/collections/1213> : accessed 10 Jan 2022); 1876, Margaret F. Warren, father: Fielding L. Warren, mother: Jane Keeney, Rockcastle Co.; from Kentucky Birth, Marriage and Death Records (1852-1910), microfilm rolls #994027-994058, KY Dept. for Libraries and Archives, Frankfort.
15. U.S., Social Security Applications and Claims Index, 1936–2007, database, *Ancestry* (<https://www.ancestry.com/search/collections/60901> : accessed 10 Dec 2021), William Robert Taylor, SSN 712-03-2120; from Social Security Applications and Claims, 1936–2007; born 16 May 1895, parents John Taylor & Margarette F. Warren. *FamilySearch* (<https://www.familysearch.org/search/film/008664487> : accessed 21 Jan 2022), digital film 008664487, image 276, Court Orders, Rockcastle Co., KY, 4: 489, John Taylor vs Fannie Taylor, divorce granted 16 Feb 1898.

16. Rockcastle Co., KY, Marriages, 9: 23, Taylor-Owens, 1900; Rockcastle Co. Clerk, Mt. Vernon.
17. Emma Ewers Taylor Hopkins, "Our Family History" (1969-1977); p. 12 & 14, birthdates for Emma Jane, Gracie, and Susie.
18. Emma Ewers Taylor Hopkins, daughter of John Cook Taylor and Emma Jane Owens, maternal grandmother of author.
19. Emma Ewers Taylor Hopkins, "Memoir" (KY, Loyall, 1977), privately held by Faye Hopkins McCauley, Mt. Vernon, KY; Faye is Emma's daughter.
20. KY Cabinet for Health and Family Services, delayed birth certificate, certificate no. 451627 (issued 1960), Emma Ewers Taylor; Office of Vital Statistics, Frankfort. Emma Ewers Taylor Hopkins, "Memoir" (1977).
21. Emma Ewers Taylor Hopkins, "Memoir" (1977).
22. *FamilySearch* (<https://www.familysearch.org/search/film/008575182> : accessed 21 Jan 2022), digital film 008575182 , image 575, Deeds, Rockcastle Co., KY, 22: 518-519, R. B. & Emma Mullins to John Taylor, 6 Dec 1906. Emma Ewers Taylor Hopkins, "Memoir" (1977), description and location of house.
23. *FamilySearch* (<https://www.familysearch.org/search/film/008575184> : accessed 21 Jan 2022), digital film 008575184 , image 374, Deeds, Rockcastle Co., KY, 26: 55-56, John C & Emma Taylor to A. B. Burnish, 11 Nov 1910.
24. Emma Ewers Taylor Hopkins, "Memoir" (1977).
25. *FamilySearch* (<https://www.familysearch.org/search/film/005557734> : accessed 7 Jan 2022), digital film 005557734, image 353, Marriage Record, Rockcastle County, KY, 12: 49, August Krueger & Susie Taylor, 8 Sep 1911.
26. Personal," *Mt. Vernon (KY) Signal*, 14 Dec 1917, p. 3, col. 1; digital image, *Newspapers.com* (<https://www.newspapers.com> : accessed 7 Jan 2022).
27. Emma Ewers Taylor Hopkins, "Memoir" (1977).
28. Emma Ewers Taylor Hopkins, "Memoir" (1977).
29. Rockcastle Co., KY, Deed Book 49: 279, J. C. & Emma Taylor to Egar Mullins, 15 Nov 1927; Rockcastle Co. Clerk, Mt. Vernon; this deed when John sold the farm references that he bought it on 29 Dec 1921 from W. M. Bryant, bk 46, p 542. Emma Ewers Taylor Hopkins, "Memoir" (1977); sold blacksmith shop when bought Buckeye farm.
30. Emma Ewers Taylor Hopkins, "Memoir" (1977).
31. Marriage Certificate, Hartford Conn Taylor and Betty Josephine Mulliner, 9 Nov 1928, Knox County, IL; original privately held by W. H. Taylor; scanned copy provided to Linda F. McCauley, 2003.
32. Paul Kingsbury, editor, *The Encyclopedia of Country Music*, compiled by staff of the Country Music Hall of Fame and Museum (New York: Oxford University Press, 1998); p 121 & 275.
33. Rockcastle Co., KY, Master Commissioner Deed Book 2: 556, Tip Langford to Elmer Hopkins, 18 Dec 1932; Rockcastle Co. Clerk, Mt. Vernon.
34. Uta Faye Hopkins McCauley, daughter of Elmer D. Hopkins and Emma E. Taylor.
35. Uta Faye Hopkins McCauley, daughter of Elmer D. Hopkins and Emma E. Taylor.
36. Uta Faye Hopkins McCauley, daughter of Elmer D. Hopkins and Emma E. Taylor.
37. Uta Faye Hopkins McCauley, daughter of Elmer D. Hopkins and Emma E. Taylor.
38. Uta Faye Hopkins McCauley, daughter of Elmer D. Hopkins and Emma E. Taylor.
39. Emma Ewers Taylor Hopkins, "Memoir" (1977).
40. Emma Ewers Taylor Hopkins, "Memoir" (1977).
41. Uta Faye Hopkins McCauley, daughter of Elmer D. Hopkins and Emma E. Taylor.
42. Uta Faye Hopkins McCauley, daughter of Elmer D. Hopkins and Emma E. Taylor.
43. Rockcastle Co., KY, Deed Book 57: 329, Clara Traub & Anna E. Krueger to Elmer Hopkins, 20 Dec 1938 and 57: 330, Anna E. Krueger to Elmer Hopkins, 17 Dec 1938; Rockcastle Co. Clerk, Mt. Vernon.
44. Uta Faye Hopkins McCauley, daughter of Elmer D. Hopkins and Emma E. Taylor.
45. Cook County, IL, "Cook County Genealogy," database, *Genealogy Online* (<http://www.cookcountygenealogy.com/> : accessed 3 Mar 2010), Anna Rose Taylor and Emery H. Chestnut, 3 Feb 1947, #1954006; index citing marriage records of Cook County (no longer available online).
46. Uta Faye Hopkins McCauley, daughter of Elmer D. Hopkins and Emma E. Taylor.



47. Uta Faye Hopkins McCauley, daughter of Elmer D. Hopkins and Emma E. Taylor.
48. "Kentucky, U.S., Death Records, 1852–1965," death certificate no. 23800 (1953), John Cook Taylor.
49. Uta Faye Hopkins McCauley, daughter of Elmer D. Hopkins and Emma E. Taylor.
50. "John C. Taylor Dies," *Mt. Vernon (KY) Signal*, 10 Sep 1953; microfilm of *Mt. Vernon Signal*, Rockcastle County Public Library, Mt. Vernon.
51. Linda F. McCauley, granddaughter of Elmer D. Hopkins and Emma E. Taylor.
52. KY Cabinet for Health and Family Services, death certificate no. 20336 (1961), Gracie Taylor.
53. "Hartford C. Taylor Buried in Illinois," *Mt. Vernon (KY) Signal*, 31 Oct 1963; microfilm of *Mt. Vernon Signal*, Rockcastle County Public Library, Mt. Vernon. Emma Ewers Taylor Hopkins, "Memoir" (1977); cause of death.
54. Linda F. McCauley, granddaughter of Elmer D. Hopkins and Emma E. Taylor.
55. Linda F. McCauley, granddaughter of Elmer D. Hopkins and Emma E. Taylor.
56. Linda F. McCauley, granddaughter of Elmer D. Hopkins and Emma E. Taylor.
57. KY Cabinet for Health and Family Services, death certificate no. 68-7549 (1968), Emma Taylor; Office of Vital Statistics, Frankfort.
58. "Mrs. Emma Taylor Dies March 17," *Mt. Vernon (KY) Signal*, 21 Mar 1968; microfilm of *Mt. Vernon Signal*, Rockcastle County Public Library, Mt. Vernon.
59. Elmwood Cemetery (Mt. Vernon, Rockcastle Co., KY), John C. and Emma J. Taylor marker, photographed by Linda McCauley, 20 Mar 2003.

# Grace Taylor



Left: Gracie, Emma, Faye, Helen; Right: Emma, Gracie, Emma Jane, Anna Rose, John

Grace Taylor was the older of John Cook Taylor and Sarah Ramsey's two daughters. She was born 27 August 1886 in Mt. Vernon in Rockcastle County, Kentucky, and lived there most of her life.<sup>1</sup>

Gracie was five years old when her mother died in 1892.<sup>2</sup> Her father remarried two and a half years later, but that marriage did not last long.<sup>3</sup> He remarried again in 1900, when Gracie was thirteen years old and the bride, Emma Jane Owens, was seventeen.<sup>4</sup>

Gracie never married nor had children.<sup>5</sup> She was once engaged to a man who lived in Wildie in Rockcastle County. But she got upset about something and broke the engagement.<sup>6</sup>

When Gracie was twenty-three years old, she had malaria. By 23 July 1909, she was improving after having been very sick.<sup>7</sup>

On 17 August 1917, Gracie, her sister Emma, and their cousin Lena were involved in an accident on Dixie Highway near Mt. Vernon. They were returning from a funeral when a car scared the horse pulling their buggy. All three were thrown under the buggy, and the horse dragged it a short distance. The buggy was torn to pieces, but Gracie, Emma, and Lena were not seriously hurt and the horse only had scratches.<sup>8</sup>

Gracie worked in Dr. Pennington's office and also at the bus station in Mt. Vernon. From March 1937 to September 1941, she lived with her sister Emma in Loyall, Kentucky, to keep house and care for Emma's children while Emma worked as postmaster.<sup>9</sup>

Other than the time with Emma's family, Gracie lived with John and Emma Jane until John died in 1953. Gracie and Emma Jane continued living together for the rest of Gracie's life.<sup>10</sup>

Gracie died of pneumonia on 25 September 1961 at the Rockcastle County Baptist Hospital in Mt. Vernon.<sup>11</sup> Reverend Gene Kearns officiated her funeral on 27 September at First Christian Church.<sup>12</sup> She was buried in Elmwood Cemetery next to her father.<sup>13</sup>

## Endnotes for Grace Taylor

1. Emma Ewers Taylor Hopkins, "Our Family History" (KY, Loyall, 1969-1977), scanned copy of fill-in-the-blanks family history privately held by Linda F. McCauley, Mt. Vernon, KY; Linda is Emma's granddaughter.
2. Emma Ewers Taylor Hopkins, "Our Family History" (1969-1977); p. 14, Gracie born 27 Aug 1887; p. 51, Sally Ramsey Taylor's died 12 Feb 1892.
3. Rockcastle Co., KY, Marriages, 48, 268-269, Taylor-Warren, 1897; Rockcastle Co. Clerk, Mt. Vernon.
4. Rockcastle Co., KY, Marriages, 9: 23, Taylor-Owens, 1900; Rockcastle Co. Clerk, Mt. Vernon. Emma Ewers Taylor Hopkins, "Our Family History" (1969-1977); p.12, Emma born 16 Apr 1882.
5. Emma Ewers Taylor Hopkins, "Memoir" (KY, Loyall, 1977), privately held by Faye Hopkins McCauley, Mt. Vernon, KY; Faye is Emma's daughter.
6. Uta Faye Hopkins McCauley, daughter of Elmer D. Hopkins and Emma E. Taylor, mother of author.
7. "Personal," *Mt. Vernon (KY) Signal*, 23 Jul 1909, p. 3, col. 1; digital image, *Newspapers.com* (<https://www.newspapers.com> : accessed 8 Dec 2021).
8. No title, *Mt. Vernon (KY) Signal*, 24 Aug 1917, p. 3, col. 4; digital image, *Chronicling America* (<https://www.chroniclingamerica.loc.gov> : accessed 24 Jul 2012), Historic American Newspapers.
9. Emma Ewers Taylor Hopkins, "Memoir" (1977).
10. Emma Ewers Taylor Hopkins, "Memoir" (1977).
11. KY Cabinet for Health and Family Services, death certificate no. 20336 (1961), Gracie Taylor; Office of Vital Statistics, Frankfort.
12. "Miss Grace Taylor Buried At Mt. Vernon," *Mt. Vernon (KY) Signal*, 28 Sep 1961; microfilm of *Mt. Vernon Signal*, Rockcastle County Public Library, Mt. Vernon.
13. Elmwood Cemetery (Mt. Vernon, Rockcastle Co., KY), Gracie Taylor marker, photographed by Linda McCauley, 20 Mar 2003.

# Susan Taylor



Left: Susie; Center: Henrietta, Susie, Marie; Right: Front-Tiny, Back-Henrietta, Susie, Marie

Susan Taylor was born on 3 February 1889 in Mt. Vernon, Rockcastle County, Kentucky, the second daughter of John Cook Taylor and Sarah A. Ramsey. Just days after Susie's third birthday, her mother died on 12 February 1892, leaving Susie and her sister, Gracie, motherless.<sup>1</sup>

John remarried in August 1894, but that marriage ended in divorce. He married a third and final time in January 1900, and Emma Jane Owens became Susie and Gracie's step-mother when the girls were 13 and 10.<sup>2</sup> They were close to Emma Jane for the rest of their lives.<sup>3</sup>

Susie married August Krueger on 7 September 1911 at John and Emma Jane's house in Mt. Vernon.<sup>4</sup> August was born on 8 June 1879 to Fritz Krueger and Henrietta Pruesner.<sup>5</sup>

The Krueger family (including August's two brothers and a sister) immigrated to the United States from Germany in 1885.<sup>6</sup> Henrietta and the four children arrived in New York City on 30 April 1885 aboard the Werra. They departed from Bremen, Germany and Southampton, England.<sup>7</sup> Fritz apparently came earlier as he is not on the passenger list for that sailing with them, however, he reported arriving in 1885 in the 1900 U.S. census.<sup>8</sup> Fritz became a naturalized U.S. citizen in 1892, which also gave his children citizenship.<sup>9</sup>

The Kruegers first settled near Crab Orchard in the Ottenheim community in Lincoln County, Kentucky. They moved to Mt. Vernon in 1892, where Fritz started a brick and lime manufacturing business. Fritz also served as a contractor on building projects using his bricks and limestone.<sup>10</sup> August worked in his father's business managing the brickyard.<sup>11</sup> Krueger oversaw construction of many building in central and eastern Kentucky. Many courthouses, churches, and houses in central and eastern Kentucky were built with their brick.<sup>12</sup>

Susie and August lived in a two-story brick house near the corner of West Main and Williams Street in Mt. Vernon.<sup>13</sup> They had four children, all born in Mt. Vernon. Henrietta W. was born on 18 March 1914, Marie on 14 September 1915, John William (Bill) on 29 May, 1920, and Christine (Tiny) on 21 February 1922.<sup>14</sup>

August died of heart failure on 16 February 1927 at the hospital in Berea, Kentucky, leaving Susie with four children under thirteen years old.<sup>15</sup> Four years later, their oldest daughter, Henrietta, died of influenza.<sup>16</sup> August and Henrietta were buried in the Krueger plot at Elmwood Cemetery in Mt. Vernon.<sup>17</sup>



Susie married Harvey Owens, the son of James W. Owens and Averill Laswell, on 31 October 1937 in Brodhead, Rockcastle County.<sup>18</sup> It was also a second marriage for him. Harvey married Lula Debord in 1906, and she died in 1936.<sup>19</sup>

Susie and Harvey didn't stay married long, but a divorce record has not been located. They lived in Ohio for a short time but by 1940, Susie was back in Mt. Vernon living in her house on West Main Street with Bill and Tiny.<sup>20</sup> Susie's last name was Krueger in that year's census record, and she went by Krueger for the rest of her life.<sup>21</sup>

Susie's health was failing in 1964. One day, her niece Faye stopped by to see her. Susie told Faye she was craving a blackberry pie. Faye told her she had some blackberries in the freezer and would go home and make her a pie. After Faye left, Dr. Griffith came by to check on Susie and told her he thought she needed to be in the hospital. She told him Faye was bringing her a blackberry pie, and he said she could go to the hospital after she had a piece.<sup>22</sup> Susie died of pneumonia and heart disease a few days later on 14 February 1964 at the Rockcastle County Baptist Hospital in Mt. Vernon.<sup>23</sup>

Susie's funeral was held on 16 February at Cox Funeral Home in Mt. Vernon with Bro. Howard Ray, minister of 1st Christian Church, officiating.<sup>24</sup> She was buried in the Krueger plot in Elmwood beside August and Henrietta.<sup>25</sup>

## Henrietta Krueger

Henrietta, who was named for August's mother, died nine days after her seventeenth birthday.<sup>26</sup> She had been ill with influenza for five days when she died at home on 27 March 1931. Mastoiditis contributed to her death.<sup>27</sup> Henrietta was buried in the Krueger plot in Elmwood Cemetery in Mt. Vernon.<sup>28</sup>

## Marie Krueger

Marie graduated from Mt. Vernon High School in 1932. After attending Eastern Kentucky State Teachers College in Richmond for one year, she received her Teachers' Certificate.<sup>29</sup>

Her first teaching assignment was at Cummins, a rural school in Rockcastle County on what is now Highway 461. In 1933 it was a rocky road which was hard for horses to travel. Marie boarded in the district and rode horse back from home to school on Monday morning and back home on Friday evening. She had about forty students and earned \$52.70 per month. The term was only six months that year.<sup>30</sup>

After teaching that one term, Marie returned to Eastern. She continued for two and a half years before becoming an adult education teacher through the W.P.A. Program.<sup>31</sup> She next worked for the State Department of Education and in the Rockcastle County Superintendent's office. Her duties included gathering county school statistics and long range planning for the county schools.<sup>32</sup>

In 1937, Marie was assigned the Durham school in the southeastern part of the county beyond Livingston. She again boarded in the district and walked a mile each way to and from school. In fall 1938, Marie was moved to the school at Wildie. She boarded with Florence Barnes on Brush Creek Road to be closer to school.<sup>33</sup> This assignment continued until at least 1940.<sup>34</sup>

After Wildie, Marie taught at the Owen Allen, Long Branch, and Freedom schools, spending two years at Freedom. In the summer of 1944, many regular qualified teachers had taken jobs in city war plants and teach positions were filled by emergency certificates. Marie's job was to help those teachers get started. She visited teachers with the least training, but also stop by schools that had qualified teachers as she passed them on her rounds.<sup>35</sup>



Marie graduated from Eastern State Teachers College in 1946. That fall she began teaching first grade at Mt. Vernon, a position she held until she retired in 1977.<sup>36</sup>

Her teaching career carried over to her churches. She taught Sunday School, Vacation Bible School and youth activities at the Presbyterian Church and later First Christian Church in Mt. Vernon for years.<sup>37</sup>

Marie was dating Henry Cox when they had a serious car wreck on 9 January 1954. Henry was driving north near Calloway in Rockcastle County around 10:30 p.m. when a car driven going south got into the wrong lane. Henry swerved to avoid a head-on collision but could not get out of the way. Marie was knocked unconscious and emergency personnel initially believed her to be dead. An ambulance transported her to Berea College Hospital in Berea, where she was treated for a concussion, shock, and bruises. Henry was shaken up, bruised, and had a broken little finger on his left hand. The other driver was not seriously hurt. Both cars were a complete loss.<sup>38</sup>

Marie married Henry on 23 November 1955 in Mt. Vernon.<sup>39</sup> Henry Huston Cox was born on 15 May 1916 in Rockcastle County, the son of Edward Cox and Mattie McFerron.<sup>40</sup> He worked for the City of Mt. Vernon Water Works.<sup>41</sup>

Marie and Henry did not have children.<sup>42</sup> They had been married almost 38 years when she died on 10 November 1993 at Central Baptist Hospital in Lexington, Fayette County, Kentucky.<sup>43</sup> Henry died on 31 December 1999 in Danville, Boyle County, Kentucky.<sup>44</sup> They are both buried in Elmwood Cemetery in Mt. Vernon.<sup>45</sup>

## John William Krueger

Bill worked for the Louisville and Nashville (L&N) Railroad and lived in Independence, Kenton County, Kentucky.<sup>46</sup> He married Leota Combs on 9 November 1944.<sup>47</sup>

Leota was born on 4 June 1908 to Matthew and Catherine Combs of Knox County, Kentucky.<sup>48</sup> Bill and Leota did not have children, but she had a daughter from a previous marriage.<sup>49</sup>

Bill died on 24 July 1999 at King's Daughters Hospital in Madison, Jefferson County, Indiana, from injuries sustained in a car accident. The accident occurred in Milton, Kentucky, which is in Trimble County.<sup>50</sup> Bill, who was suffering from dementia, had left home to cash a check at a Kroger store in Independence. Why he ended up sixty miles away is unknown.<sup>51</sup> Bill was buried on 27 July in Floral Hills Memorial Gardens in Kenton County, Kentucky.<sup>52</sup> Leota died on 31 January 2001 and was buried beside Bill.<sup>53</sup>

## Christine Krueger

Christine was known as Tiny to friends and relatives. Her college attendance and teaching career mirrored Marie's. She attended Eastern Kentucky State Teachers College (now Eastern Kentucky University) for one year before her first teaching assignment. She attended college part-time while teaching and later graduated.<sup>54</sup>

Tiny taught at five one-room schools in Rockcastle County before joining the faculty at Mt. Vernon Grade School as an 8th grade teacher in 1950. The one-room schools where she taught were Gum Springs, Boiling Springs, Sayre, New Chesnut Ridge, and Brush Creek.<sup>55</sup>

In an oral interview conducted as part of the Rockcastle County Oral History Project, Tiny told that rural teachers served as nurse, doctor, dentist, counselor, and sometimes playmate. At the beginning of the school year, rural teachers were provided a dipper, water bucket, erasers, and books by the Board of Education. She and other rural teachers held pie suppers to raise money for other supplies they needed.<sup>56</sup>

Tiny never married and did not have children. She enjoyed painting as a hobby, and several of her paintings still hang in her cousin Faye's house.<sup>57</sup>

She died on 27 October 1998 at the Rockcastle Hospital in Mt. Vernon.<sup>58</sup> Tiny was buried in the Krueger plot at Elmwood Cemetery in Mt. Vernon.<sup>59</sup>

# Endnotes for Susan Taylor

1. Emma Ewers Taylor Hopkins, "Our Family History" (KY, Loyall, 1969-1977), scanned copy of fill-in-the-blanks family history privately held by Linda F. McCauley, Mt. Vernon, KY; Linda is Emma's granddaughter.
2. Emma Ewers Taylor Hopkins, "Our Family History," 1969-1977.
3. Linda F. McCauley, granddaughter of Elmer D. Hopkins and Emma E. Taylor.
4. *FamilySearch* (<https://www.familysearch.org/search/film/005557734> : accessed 7 Jan 2022), digital film 005557734, image 353, marriage records, Rockcastle County, KY, 12: 49, August Krueger & Susie Taylor, 8 Sep 1911. Emma Ewers Taylor Hopkins, "Memoir" (KY, Loyall, 1977), privately held by Faye Hopkins McCauley, Mt. Vernon, KY; Faye is Emma's daughter; wedding at John & Emma Jane's house.
5. "Kentucky, U.S., Death Records, 1852-1965," digital image, *Ancestry* (<https://www.ancestry.com/search/collections/1222> : accessed 26 Sep 2005), death certificate no. 4371 (1927), August Krueger; from microfilm 994027-994058, KY Dept. for Libraries and Archives, Frankfort.
6. 1910 U.S. census, Rockcastle Co., KY, population schedule, Mt. Vernon, enumeration district (ED) 97, sheet 2B, dwelling 40, family 40, Fritz Krueger; digital image, *Ancestry* (<https://www.ancestry.com/search/collections/7884> : accessed 2 Jan 2009); from NARA microfilm T624, roll 500; immigration year for Fritz, August, and William.
7. "New York, U.S., Arriving Passenger and Crew Lists (including Castle Garden and Ellis Island), 1820-1957," digital images, *Ancestry* ([www.ancestry.com/search/collections/7488](http://www.ancestry.com/search/collections/7488) : accessed 6 Jan 2022), Date > 1885 > Apr > 30 > Werra > Hette Krueger and children Pauline, Fritz, August, & Wilhelm; from Passenger Lists of Vessels Arriving at New York, New York, 1820-1897, records of the U.S. Customs Service, Record Group 36, NARA, Washington, D.C.
8. 1900 U.S. census, Rockcastle Co., KY, population schedule, Mt. Vernon, enumeration district (ED) 64, sheet 3A, dwelling 50, family 50, Fritz Krueger; digital image, *Ancestry* (<https://www.ancestry.com/search/collections/7602> : accessed 15 Jun 2020); from NARA microfilm T623.
9. 1920 U.S. census, Rockcastle Co., KY, population schedule, West Mt. Vernon Precinct, enumeration district (ED) 238, sheet 13A, dwelling 6, family 10, Fritz Krueger; digital image, *Ancestry* (<https://www.ancestry.com/search/collections/6061> : accessed 2 Jan 2009); from NARA microfilm T625, roll 595.
10. "Fritz Krueger Dead," *Interior Journal* (Stanford, KY), 12 Oct 1928, p. 10, col. 2; digital image, *Newspapers.com* (<https://www.newspapers.com> : accessed 5 Jan 2022).
11. 1920 U.S. census, Rockcastle Co., KY, population schedule, Mt. Vernon, enumeration district (ED) 238, sheet 13B, dwelling 15, family 19, August Krueger; digital images, *Ancestry* (<https://www.ancestry.com/search/collections/6061> : accessed 13 Aug 2008); citing National Archives and Records Administration microfilm T625, roll 595.
12. "Fritz Krueger Dead," *Interior Journal*, 12 Oct 1928.
13. Linda F. McCauley, granddaughter of Elmer D. Hopkins and Emma E. Taylor.
14. "Kentucky, U.S., Death Records, 1852-1965," digital image, *Ancestry* (<https://www.ancestry.com/search/collections/1222> : accessed 28 Feb 2011), death certificate no. 20756 (1931), Henrietta Krueger; from microfilm 994027-994058, KY Dept. for Libraries and Archives, Frankfort; Henrietta's birthdate. "Kentucky, U.S., Birth Index, 1911-1999," database, *Ancestry* (<https://www.ancestry.com/search/collections/8788> : accessed 7 Jan 2022), birth certificate no. 5853 (1915), Marie Krueger; birth certificate no. 7996 (1920), John W. Krueger; and birth certificate no. 05852 (1922), Christine Krueger; from Kentucky Birth, Marriage, and Death Databases: Births 1911-1999, Dept. for Libraries and Archives, Frankfort.
15. "Kentucky, U.S., Death Records, 1852-1965," digital image, *Ancestry* (<https://www.ancestry.com/search/collections/1222> : accessed 26 Sep 2005), death certificate no. 4371 (1927), August Krueger; from microfilm 994027-994058, KY Dept. for Libraries and Archives, Frankfort.
16. "Kentucky, U.S., Death Records, 1852-1965," death certificate no. 20756 (1931), Henrietta Krueger.
17. Elmwood Cemetery (Mt. Vernon, Rockcastle Co., KY), August Krueger marker and Henrietta Krueger marker, photographed by Linda McCauley, 20 Mar 2003.
18. "Kentucky, U.S., County Marriage Records, 1783-1965," digital image, *Ancestry* (<https://www.ancestry.com/search/collections/61372> : accessed 25 Oct 2020), Harvey Owens and Susie Krueger, 31 Oct 1937, Brodhead, Rockcastle Co., KY; from Marriage Records, courthouses, various counties in KY.
19. "Kentucky, U.S., County Marriage Records, 1783-1965," digital image, *Ancestry* (<https://www.ancestry.com/search/collections/61372> : accessed 7 Jan 2022), Harvey Owens and Lula Deboard, 6 May 1906, Rockcastle Co., KY; from Marriage

Records, courthouses, various counties in KY. *Find a Grave* (<https://www.findagrave.com> : viewed 7 Jan 2022), memorial 6962273, for Lula A. Debord Owens, (Piney Grove Cemetery, Brodhead, Rockcastle County, KY), digital image, 4 Dec 2002, by Sheila Kidwell; double headstone for Harvy and Lula Owens.

20. Uta Faye Hopkins McCauley, daughter of Elmer D. Hopkins and Emma E. Taylor; lived in Ohio.

21. 1940 U.S. census, Rockcastle Co., KY, population schedule, Mt. Vernon, enumeration district (ED) 102-1, sheet 8B, household 185, Susie Krueger; digital image, *Ancestry* (<https://www.ancestry.com/search/collections/2442> : accessed 4 Apr 2012); from NARA microfilm 627, roll 1353.

22. Uta Faye Hopkins McCauley, daughter of Elmer D. Hopkins and Emma E. Taylor.

23. “Kentucky, U.S., Death Records, 1852–1965,” digital image, *Ancestry* (<https://www.ancestry.com/search/collections/1222> : accessed 6 Dec 2021), death certificate no. 4246 (1964), Susie Krueger; from microfilm 994027–994058, KY Dept. for Libraries and Archives, Frankfort.

24. “Mrs. Susie Krueger Funeral Held Sunday,” *Mt. Vernon (KY) Signal*, Feb 1964, scanned clipping held by Linda F. McCauley, Mt. Vernon, KY, 2003, original saved by Betty Mulliner Taylor.

25. Elmwood Cemetery (Mt. Vernon, Rockcastle Co., KY), Susie Krueger marker, photographed by Linda McCauley, 20 Mar 2003.

## Endnotes for Henrietta Krueger

26. “Kentucky, U.S., Death Records, 1852–1965,” death certificate no. 4371 (1927), August Krueger; mother’s name Henrietta.

27. “Kentucky, U.S., Death Records, 1852–1965,” death certificate no. 20756 (1931), Henrietta Krueger.

28. Elmwood Cemetery (Mt. Vernon, Rockcastle Co., KY), Henrietta Krueger marker.

## Endnotes for Marie Krueger

29. “Marie Krueger Cox,” , copy from unidentified publication, 1989, privately held by Faye Hopkins McCauley, Mt. Vernon, KY, copy provided by Cox; article written by Cox.

30. Marie Krueger Cox, 1989.

31. Marie Krueger Cox, 1989. The Works Progress Administration, WPA, was an employment and infrastructure program created by President Franklin Roosevelt in 1935, during the Great Depression.

32. Marie Krueger Cox, 1989.

33. Marie Krueger Cox, 1989.

34. 1940 U.S. census, Rockcastle Co., KY, population schedule, Mag Dist. 4, enumeration district (ED) 102-12, sheet 2B, household 23, Florence Barnes; digital image, *Ancestry* (<https://www.ancestry.com/search/collections/2442> : accessed 6 Jan 2022); from NARA microfilm 627, roll 1353.

35. Marie Krueger Cox, 1989.

36. Marie Krueger Cox, 1989.

37. Marie Krueger Cox, 1989. Uta Faye Hopkins McCauley, daughter of Elmer D. Hopkins and Emma E. Taylor; names of the churches.

38. “Injured When Two Cars Collide on U.S. 25 near Calloway,” *Mt. Vernon (KY) Signal*, 14 Jan 1954; microfilm of *Mt. Vernon Signal*, Rockcastle County Public Library, Mt. Vernon.

39. *FamilySearch* (<https://www.familysearch.org/search/film/005686096> : accessed 1 Aug 2008), digital film 005698452, image 69, Rockcastle Co., KY, General Marriage Index, Henry H. Cox and Marie Krueger, 23 Nov 1955, 61: 366.

40. “U.S., Social Security Applications and Claims Index, 1936–2007,” database, *Ancestry* (<https://www.ancestry.com/search/collections/60901> : accessed 7 Jan 2022), Henry Huston Cox, SSN 400-14-0083; from Social Security Applications and Claims, 1936–2007.

41. Uta Faye Hopkins McCauley, daughter of Elmer D. Hopkins and Emma E. Taylor.

42. Uta Faye Hopkins McCauley, daughter of Elmer D. Hopkins and Emma E. Taylor.

43. “Kentucky, U.S., Death Index, 1911-2000, database, *Ancestry* (<https://www.ancestry.com/search/collections/3077> : accessed 7 Jan 2022), Marie Cox, 1992, Fayette Co.; from Kentucky Death Index, 1911-present, Cabinet for Health and Family Services, Frankfort.

44. “Kentucky, U.S., Death Index, 1911-2000, database, *Ancestry* (<https://www.ancestry.com/search/collections/3077> : accessed 7 Jan 2022), Henry H. Cox, 1999, Boyle Co.; from Kentucky Death Index, 1911-present, Cabinet for Health and Family Services, Frankfort.

45. Elmwood Cemetery (Mt. Vernon, Rockcastle Co., KY), Henry H. and Marie K. Cox marker, photographed by Linda McCauley, 4 May 2005.

## Endnotes for John William Krueger

46. “Bill Krueger,” *Mt. Vernon (KY) Signal*, 29 Jul 1999; microfilm of *Mt. Vernon Signal*, Rockcastle County Public Library, Mt. Vernon.

47. Emma Ewers Taylor Hopkins, “Our Family History” (1969-1977).

48. *Find a Grave*, memorial 148345579, for Leota C. Combs Krueger, (Floral Hills Memorial Gardens, Taylor Mill, Kenton County, KY), digital image, 26 Jun 2015, by Karen Simpson; birthdate. 1910 U.S. census, Knox Co., KY, population schedule, Mag. Dist. 6, enumeration district (ED) 111, sheet 10A, dwelling 192, family 192, Matthew Combs; digital image, *Ancestry* (<https://www.ancestry.com/search/collections/7884> : accessed 7 Jan 2022); from NARA microfilm T624, roll 489.

49. Uta Faye Hopkins McCauley, daughter of Elmer D. Hopkins and Emma E. Taylor.

50. “Indiana, U.S., Death Certificates, 1899-2011,” digital image, *Ancestry* (<https://www.ancestry.com/search/collections/60716> : accessed 7 Jan 2022), death certificate no. 024458 (1999), John William Krueger; from Death Certificates, 1900-2011, State Board of Health, Indiana Archives and Records Administration, Indianapolis.

51. Uta Faye Hopkins McCauley, daughter of Elmer D. Hopkins and Emma E. Taylor.

52. “Indiana, U.S., Death Certificates, 1899-2011,” death certificate no. 024458 (1999), John William Krueger.

53. *Find a Grave*, memorial 148345579, Leota C. Combs Krueger, gravestone photo by Karen Simpson.

## Endnotes for Christine Krueger

54. Uta Faye Hopkins McCauley, daughter of Elmer D. Hopkins and Emma E. Taylor.

55. Interview with Christine Krueger, 29 Jul 1979, digital recording; Pass The Word; Rockcastle County Oral History Project, Kentucky Historical Society, Frankfort; copy held privately by Linda F. McCauley, Mt. Vernon, KY. Uta Faye Hopkins McCauley, daughter of Elmer D. Hopkins and Emma E. Taylor.

56. Interview with Christine Krueger, 29 Jul 1979, digital recording; Kentucky Historical Society, Frankfort.

57. Uta Faye Hopkins McCauley, daughter of Elmer D. Hopkins and Emma E. Taylor.

58. “Christine Krueger,” *Mt. Vernon (KY) Signal*, 5 Nov 1998; microfilm of *Mt. Vernon Signal*, Rockcastle County Public Library, Mt. Vernon.

59. Elmwood Cemetery (Mt. Vernon, Rockcastle Co., KY), Christine Krueger marker, photographed by Linda McCauley, 20 Mar 2003.



# William Robert Taylor



Left: Bill & Nellie; Right: Bill

William Robert Taylor spent many years believing his father was dead and not knowing that he was lost to a big part of his family.<sup>1</sup> Bill was born on 16 May 1895 in Rockcastle County, Kentucky, and was the only child of John Cook Taylor and Margaret F. “Fannie” Warren.<sup>2</sup>

John and Fannie separated when Bill was a small child, possibly an infant.<sup>3</sup> Their divorce was granted on 16 February 1898, before Bill was three years old.<sup>4</sup> Later in life, Bill and his sister Emma told that John chased after the wagon begging Fannie not to take his son away but could not stop her.<sup>5</sup> Fannie and Bill moved in with her parents, Fielden L. Warren and Jane Keeney, in the Skeggs Creek area, which is in the southwest corner of Rockcastle County near Pulaski County.<sup>6</sup>

In early 1908, Fannie’s parents moved to Kansas.<sup>7</sup> Fannie and twelve-year-old Bill went along with them.<sup>8</sup> Fannie’s brother Matthew also moved to Kansas around this time.<sup>9</sup> Her sisters Eliza and Lucy had already lived in Kansas for many years.<sup>10</sup>

Fannie married Jeremiah Logsdon in 1908, probably in Leavenworth County.<sup>11</sup> Jerry was a widower who had lived in Pulaski County, Kentucky, and may have moved to Kansas around the same time some of the Warrens did.<sup>12</sup> Jerry had two sons, Virgil and Logan, from a previous marriage, and he and Fannie had two sons together.<sup>13</sup> Oscar Kenneth was born in 1914 and Herman E. in 1917.<sup>14</sup>

Bill married Nellie Frances Ready, daughter of Torrence H. and Zella Ready, on 21 March 1917 in Leavenworth County.<sup>15</sup> Nellie was born on 6 July 1902 in Kansas.<sup>16</sup> Bill and Nellie lived in Easton and had three sons—Orin Edward, born on 13 November 1919; Donald Warren, born on 17 February 1921; and Verne Kenneth, born on 16 August 1922.<sup>17</sup>

Bill spent much of his life believing that his father was dead, because that is what his mother told him.<sup>18</sup> On her deathbed in 1926, Fannie told Bill that his father had not died all those years ago and was probably still living in Mt. Vernon, Kentucky. Bill returned to Rockcastle County about 1931 for the first time since he left about twenty-three years earlier. He traveled by train and did not contact his father before making the trip. When he got off the train in Mt. Vernon, he asked about John Taylor and someone gave him directions to John’s house.<sup>19</sup>

John did not know what had become of Bill. He did not know where Fannie had taken him or even if he was alive. But when he answered the knock at his door that day, he took one look at the man standing before him and said, “That’s my boy.”<sup>20</sup>

The Taylor family welcomed Bill with open arms. He learned he had five half-siblings—four sisters and one brother.<sup>21</sup> His sister Emma wrote this about meeting Bill:

“I did not see him till I was 30 yrs. old. He came to visit Papa. We were so glad to see him and he felt as much like a brother as my whole brother, Hartford, did. He came back every year after that and was home when Papa died.”<sup>22</sup>

Bill did indeed return to Kentucky every year to visit until the late 1960s, when he could no longer make the trip. Besides his Taylor family, relatives of his mother still lived in Rockcastle County and Bill would see them as well. Even after his father died in 1953, Bill continued his annual visit and always stayed with his step-mother, Emma Jane. Bill’s sister Emma visited him in Kansas a few times.<sup>23</sup>

Bill farmed during the early years of their marriage and his occupation was laborer in 1930.<sup>24</sup> Bill and Nellie divorced between 1930 and 1937. Nellie married a man named Starr. She died on 24 May 1995 in California and was buried in Westminster Memorial Park in Orange County.<sup>25</sup>

On 16 May 1937, Bill married Larene M. McNeill, but their marriage was apparently short.<sup>26</sup> By 1940, Bill, Orin, and Verne had moved to Lawrence in Douglas County and lived on New Hampshire Street. Larene was not with them, and Bill’s marital status was widowed. Whether she died or they separated is unknown. Bill worked as a building carpenter for the Union Pacific Railroad.<sup>27</sup> He worked for the railroad until he retired.<sup>28</sup>

In 1942, Bill lived at 631 N. 9th Street in Lawrence. Opal Phillips, living at that same address was listed on Bill’s World War II draft registration card as the person who would always know his address.<sup>29</sup> Bill and Opal apparently married some time after he registered for the draft on 27 April 1942.<sup>30</sup> Opal’s parents were Elmer E. Phillips and Jessie Mae Castle.<sup>31</sup> She was born on 1 April 1900 and died on 18 May 1946. Opal was buried in Oak Hill Cemetery in Lawrence.<sup>32</sup>

In 1946, Bill lived at 1547 Kentucky Street in Lawrence.<sup>33</sup> By 1958, he was back at 631 N. 9th Street.<sup>34</sup> From 1959 to 1963, and probably longer, Bill lived at 856 Lyons Street in Lawrence.<sup>35</sup>

Bill was eighty years old when he died on 7 July 1975 in Lawrence Memorial Hospital. His funeral was held at the Rumsey Funeral Home in Lawrence and he was buried there in Oak Hill Cemetery.<sup>36</sup>

## Orin Edward Taylor

Orin enlisted in the U.S. Army on 1 April 1941 at Ft. Leavenworth, Kansas. He had attended one year of college and worked as an automobile service man since graduating from high school. Orin was single and had no children.<sup>37</sup>

While his father had been visiting his Kentucky family for several years by then, Orin had never met them. He decided he wanted to meet his grandfather and other relatives before reporting for duty. He made the trip alone from Kansas to Kentucky. His grandfather and the rest of the family welcomed him, just as they had his father about ten years earlier.<sup>38</sup> Even though the U.S. had not yet entered World War II, you have to wonder if Orin made that trip in case it was his only chance to meet them.

Orin was a 1st Lieutenant serving in Company E of the 4th Ranger Battalion.<sup>39</sup> He was sent overseas in 1943 and was wounded in Italy on 13 November. Details about his injuries are unknown, but he was hospitalized until 12 December.<sup>40</sup>

The 4th Rangers were among the forces that went ashore near Anzio, Italy, on 22 January 1944 as part of Operation Shingle.<sup>41</sup> Orin was killed in action nine days later on 31 January 1944.<sup>42</sup>

Bill received a letter from the War Department dated 2 November 1945 advising that Orin was buried in the U.S. Military Cemetery in Nettuno, Italy in plot C, row 22, grave 400.<sup>43</sup> That cemetery is officially named Sicily-Rome American Cemetery today.<sup>44</sup>

Orin's mother told her grandchildren that they left Orin buried in Italy "with the other boys."<sup>45</sup> However, Orin is not found in a search of the American Battle Monuments Commission register of burials and memorials, which contains records of World War I and World War II overseas military cemeteries. Individuals who died overseas and were repatriated to the U.S. for burial are not included in this register.<sup>46</sup>

Orin has a headstone in Fort Leavenworth National Cemetery in Fort Leavenworth, Kansas.<sup>47</sup> His National Cemetery Interment Control Form (QMC 14) shows he died on 31 January 1944 and was interred in Fort Leavenworth on 6 August 1948. His headstone was ordered on 14 October 1948. Remarks include that authorization was teleg. KCQM (telegram, Kansas City Quartermaster Depot) dated 27 July 1948 and OQMG form 315 sent to next of kin was returned.<sup>48</sup> Since Orin is not listed in the burials in the Sicily-Rome American Cemetery and his QMC-14 states he was interred in Fort Leavenworth Cemetery, it appears Orin's remains were returned to Kansas from Italy more than four years after his death.

After Orin died, his mother joined the U.S. Army and served from 10 July 1944 to 31 October 1945.<sup>49</sup>

## Donald Taylor

Donald only lived eight months. He died at St. John's Hospital in Leavenworth on 21 October 1921. Donald got something caught in his throat while playing and had been gradually strangling to death over the past two days. After a funeral held at the Methodist Church in Easton, Donald was buried in Easton Cemetery.<sup>50</sup>

## Verne Kenneth Taylor

Verne married Marjorie Jean Bunds on 29 August 1942 in Jackson County, Missouri.<sup>51</sup> Less than four months later, he joined the U.S. Army on 7 December 1942 and served until 19 February 1946. Verne and Marjorie had four children and divorced in 1970 in California.<sup>52</sup>

Verne died on 18 November 2000 in California. He was buried in Riverside National Cemetery.<sup>53</sup>

# Endnotes for William Robert Taylor

1. Emma Ewers Taylor Hopkins, daughter of John Cook Taylor and Emma Jane Owens, maternal grandmother of author; told to author.
2. “U.S., Social Security Applications and Claims Index, 1936–2007,” database, *Ancestry* (<https://www.ancestry.com/search/collections/60901> : accessed 10 Dec 2021), William Robert Taylor, SSN 712-03-2120; from Social Security Applications and Claims, 1936–2007; birth date and parents John Taylor & Margarette F. Warren. Emma Ewers Taylor Hopkins, “Our Family History” (KY, Loyall, 1969-1977), scanned copy of fill-in-the-blanks family history privately held by Linda F. McCauley, Mt. Vernon, KY; Linda is Emma’s granddaughter; p. 12, John Cook Taylor full name; p. 51, Fannie Warren John’s 2nd wife, mother of Bill.
3. Emma Ewers Taylor Hopkins, “Memoir” (KY, Loyall, 1977), privately held by Faye Hopkins McCauley, Mt. Vernon, KY; Faye is Emma’s daughter.
4. *FamilySearch* (<https://www.familysearch.org/search/film/008664487> : accessed 21 Jan 2022), digital film 008664487, image 276, Court Orders, Rockcastle Co., KY, 4: 489, John Taylor vs Fannie Taylor, divorce granted 16 Feb 1898.
5. Emma Ewers Taylor Hopkins, daughter of John Cook Taylor and Emma Jane Owens, maternal grandmother of author. William Robert Taylor, son of John Cook Taylor and Margaret F. Warren; Bill once showed his niece Faye Hopkins McCauley the road where John chased after the wagon.
6. 1900 U.S. census, Rockcastle Co., KY, population schedule, Precinct 7, enumeration district (ED) 71, sheet 14A, dwelling 259, family 278, Fielden L. Warren; digital image, *Ancestry* (<https://www.ancestry.com/search/collections/7602> : accessed 2 Jan 2009); from NARA microfilm T623.
7. “Personal,” *Mt. Vernon (KY) Signal*, 3 Jan 1908, p. 3, col. 1; *Newspapers.com* (<https://www.newspapers.com> : accessed 11 Jan 2022); Rev. F. L. Warren leaving for Kansas in near future. “An Interesting Couple,” *Atchison (KS) Weekly Globe*, 15 Oct 1908, p. 8, col. 7; digital image, *Newspapers.com* (<https://www.newspapers.com> : accessed 13 Dec 2021); says the Warrens moved to Kansas less than a year ago.
8. “Logsdon,” unidentified Kansas newspaper, May or Jun 1926, clipping held by Sandra Taylor York, CA, scanned copy provided to Linda McCauley, Mt. Vernon, KY, 2021; came to Kansas in 1908.
9. 1910 U.S. census, Atchison Co., KS, population schedule, Benton, enumeration district (ED) 11, sheet 2B, dwelling 37, family 37, Matthew Warren; digital image, *Ancestry* (<https://www.ancestry.com/search/collections/7884> : accessed 5 Dec 2021); from NARA microfilm T624, roll 431; Fannie’s brother Matthew in KS.
10. “Personal,” *Mt. Vernon (KY) Signal*, 10 Jan 1908, p. 3, col. 1; *Newspapers.com* (<https://www.newspapers.com> : accessed 11 Jan 2022); R. S. Cress, Eliza’s husband, said to have gone to Kansas 12 years earlier. “Kansas, U.S., County Marriage Records, 1811-1911,” digital image, *Ancestry* (<https://www.ancestry.com/search/collections/61371> : accessed 11 Jan 2022), W. A. Cress and Lucy G. Warren, 17 Mar 1886, Brown Co., KS; from Marriage Records, various KS District Courts and KS State Historical Society.
11. “Logsdon,” unidentified Kansas newspaper, May or Jun 1926; married J. F. Logsdon in 1908. 1910 U.S. census, Leavenworth Co., KS, population schedule, Easton, enumeration district (ED) 86, sheet 7B, dwelling 145, family 143, Jerry Logsdon; digital image, *Ancestry* (<https://www.ancestry.com/search/collections/7884> : accessed 5 Dec 2021); from NARA microfilm T624, roll 444; Fannie married to Logsdon, she & Bill living in Kansas. 1900 U.S. census, Pulsaki Co., KY, population schedule, Dallas District, enumeration district (ED) 113, sheet 11A, dwelling 195, family 195, Jeremiah Logsdon; digital image, *Ancestry* (<https://www.ancestry.com/search/collections/7602> : accessed 5 Dec 2021); from NARA microfilm T623; first name Jeremiah.
12. 1900 U.S. census, Pulsaki Co., KY, pop. Sch., Dallas District, ED 113, sheet 11A, dwell. 195, fam. 195, Jeremiah Logsdon.
13. 1910 U.S. census, Leavenworth Co., KS, pop. sch., Easton, ED 86, sheet 7B, dwell. 145, fam. 143, Jerry Logsdon; Jerry’s sons Virgil & Logan living with him.
14. 1920 U.S. census, Jackson Co., KS, population schedule, Garfield Township, enumeration district (ED) 57, sheet 1B, dwelling 20, family 20, Jerry F. Logsdon; digital image, *Ancestry* (<https://www.ancestry.com/search/collections/6061> : accessed 4 Sep 2013); from NARA microfilm T625, roll 534; Oscar K. age 5, Herman E. age 2 3/12.
15. “Leavenworth County, Kansas, U.S., Marriage Records, 1900-1920,” database, *Ancestry* (<https://www.ancestry.com/search/collections/6267> : accessed 5 Dec 2021), William Robert Taylor and Nellie Frances Ready; from Leavenworth County Marriages 1900-1920, Leavenworth County Clerk; marriage date and location. 1910 U.S. census, Leavenworth Co., KS, population schedule, Easton, enumeration district (ED) 86, sheet 5B, dwelling 98, family 101, Torrence H. Ready; digital image, *Ancestry* (<https://www.ancestry.com/search/collections/7884> : accessed 5 Dec 2021); from NARA microfilm T624, roll 444; Nellie living with parents Torrence H. And Zela Ready.
16. *Find a Grave* (<https://www.findagrave.com> : viewed 17 Jan 2022), memorial 52082607, for Nellie F. Ready Starr, (Westminster Memorial Park, Westminster, Orange County, CA), digital image, 29 Jan 2020, by Chuck Schubert. Sandra Taylor York to Linda McCauley, emails, Dec 2019, “Documenting the Details Comment: Taylor;” privately held by McCauley; Nellie



married a man named Starr. 1910 U.S. census, Leavenworth Co., KS, pop. sch., Easton, ED 86, sheet 5B, dwell. 98, fam. 101, Torrence H. Ready; Nellie born in Kansas.

17. 1920 U.S. census, Leavenworth Co., KS, population schedule, Easton Township, enumeration district (ED) 91, sheet 5A, dwelling 101, family 101, William Taylor; digital image, *Ancestry* (<https://www.ancestry.com/search/collections/6061> : accessed 4 Sep 2013); from NARA microfilm T625, roll 537; Bill, Nellie, & Orin. 1930 U.S. census, Leavenworth Co., KS, population schedule, Easton, enumeration district (ED) 52-8, sheet 1B, dwelling 27, family 31, William R. Taylor; digital image, *Ancestry* (<https://www.ancestry.com/search/collections/6224> : accessed 13 Nov 2021); from NARA microfilm T626; Bill, Nellie, Orin, & Verne. *Find a Grave* (<https://www.findagrave.com> : viewed 1 Nov 2007), memorial 3665614, for Orin E. Taylor, (Fort Leavenworth National Cemetery, Fort Leavenworth, KS), digital image, 20 Oct 2007, by Ed n Edna Lane; Orin's birthdate. *Find a Grave* (<https://www.findagrave.com> : viewed 10 Dec 2021), memorial 26903939, for Donald Taylor, (Easton Cemetery, Easton, KS), digital image, 20 Jul 2008, by Gary Stafford; birthdate on headstone 17 Feb 1920, year incorrect, see obituary. "Death of Donald Taylor," *Leavenworth (KS) Post*, 21 Oct 1921, p. 1, col. 7; digital image, *Newspapers.com* (<https://www.newspapers.com> : accessed 12 Dec 2021); birth and death year 1921, not 1920 on grave marker. "U.S., Social Security Applications and Claims Index, 1936–2007," database, *Ancestry* (<https://www.ancestry.com/search/collections/60901> : accessed 10 Dec 2021), Verne Kenneth Taylor, SSN 509-14-2161; from Social Security Applications and Claims, 1936–2007, Verne's birthdate.

18. Emma Ewers Taylor Hopkins, daughter of John Cook Taylor and Emma Jane Owens, maternal grandmother of author.

19. Emma Ewers Taylor Hopkins, daughter of John Cook Taylor and Emma Jane Owens, maternal grandmother of author.

20. Emma Ewers Taylor Hopkins, daughter of John Cook Taylor and Emma Jane Owens, maternal grandmother of author.

21. Emma Ewers Taylor Hopkins, daughter of John Cook Taylor and Emma Jane Owens, maternal grandmother of author.

22. Emma Ewers Taylor Hopkins, "Memoir" (1977).

23. Uta Faye Hopkins McCauley, daughter of Elmer D. Hopkins and Emma E. Taylor. Linda F. McCauley, granddaughter of Elmer D. Hopkins and Emma E. Taylor.

24. "U.S. World War I Draft Registration Cards, 1917–1918," digital image, *Ancestry* (<https://www.ancestry.com/search/collections/6482> : accessed 30 Aug 2007), William R. Taylor, serial no. 1517, Leavenworth Co., KS; from U.S., World War I Selective Service System Draft Registration Cards, 1917–1918, M1509, NARA, Washington, D.C.; occupation farmer. 1920 U.S. census, Leavenworth Co., KS, pop. sch., Easton Township, ED 91, sheet 5A, dwell. 101, fam. 101, William Taylor; occupation farming. 1930 U.S. census, Leavenworth Co., KS, pop. sch., Easton, ED 52-8, sheet 1B, dwell. 27, fam. 31, William R. Taylor; occupation laborer.

25. *Find a Grave* (<https://www.findagrave.com> : viewed 17 Jan 2022), memorial 52082607, for Nellie F. Ready Starr, (Westminster Memorial Park, Westminster, Orange County, CA), digital image, 29 Jan 2020, by Chuck Schubert. Sandra Taylor York to Linda McCauley, emails, Dec 2019, "Documenting the Details Comment: Taylor;" privately held by McCauley; Nellie's last name Starr.

26. Sandra Taylor York to Linda McCauley, emails, Dec 2019, "Documenting the Details Comment: Taylor;" privately held by McCauley; marriage to Larene documented in Bill's Bible.

27. 1940 U.S. census, Douglas Co., KS, population schedule, Lawrence, enumeration district (ED) 23-15, sheet 2B, household 56, William Taylor; digital image, *Ancestry* (<https://www.ancestry.com/search/collections/2442> : accessed 10 Dec 2021); from NARA microfilm 627, roll 1229; Nellie not with Bill, Orin, & Verne, Bill's occupation.

28. "William Taylor," *Leavenworth (KS) Times*, 8 Jul 1975, p. 5, col. 2; digital image, *Newspapers.com* (<https://www.newspapers.com> : accessed 12 Dec 2021).

29. "U.S. World War II Draft Registration Cards, 1942," digital image, *Ancestry* (<https://www.ancestry.com/search/collections/1002> : accessed 11 Jan 2022 ), William Robert Taylor, serial no. 2256, Douglas Co., KS; from Records of the Selective Service System, 1926–1975, Record Group 147, NARA, St Louis, Missouri.

30. *Find a Grave* (<https://www.findagrave.com> : viewed 23 Jan 2022), memorial 9591939 for Opal Phillips Taylor, (Memorial Park Cemetery, Lawrence, Douglas County, KS), digital image, 3 Dec 2007, by A. & R.

31. 1940 U.S. census, Douglas Co., KS, population schedule, Lawrence, enumeration district (ED) 23-16, sheet 2A, household 32, Jessie Phillips; digital image, *Ancestry* (<https://www.ancestry.com/search/collections/2442> : accessed 23 Jan 2022); from NARA microfilm 627, roll 1229; daughter Opal, single. 1910 U.S. census, Douglas Co., KS, population schedule, Grant Township, enumeration district (ED) 71, sheet 2B, dwelling 21, family 21, Elmer E. Phillips; digital image, *Ancestry* (<https://www.ancestry.com/search/collections/7884> : accessed 5 Dec 2021); from NARA microfilm T624, roll 438; daughter Opal, wife Jessie. "Kansas, U.S., County Marriage Records, 1811-1911," digital image, *Ancestry* (<https://www.ancestry.com/search/collections/61371> : accessed 23 Jan 2022), Elmer E. Phillips and Jessie M. Castl2, 17 Apr 1897, Douglas Co., KS; from Marriage Records, various KS District Courts and KS State Historical Society.

32. *Find a Grave*, memorial 9591939, Opal Phillips Taylor, gravestone photo by A. & R.



33. “Kansas, U.S., City and County Census Records, 1919-1961,” digital image, *Ancestry* (<https://www.ancestry.com/search/collections/2270>: accessed 23 Jan 2022), 1946, William R. Taylor, 1547 Kentucky St., Lawrence, KS; from State Board of Agriculture Population Schedules and Statistical Rolls, cities (1919-1961) and counties (1953-1979, Kansas State Historical Society, Topeka.

34. “Kansas, U.S., City and County Census Records, 1919-1961,” digital image, *Ancestry* (<https://www.ancestry.com/search/collections/2270>: accessed 23 Jan 2022), 1958, William R. Taylor, 621 N. 9th St, Lawrence, KS; from State Board of Agriculture Population Schedules and Statistical Rolls, cities (1919-1961) and counties (1953-1979, Kansas State Historical Society, Topeka.

35. “Kansas, U.S., City and County Census Records, 1919-1961,” digital image, *Ancestry* (<https://www.ancestry.com/search/collections/2270>: accessed 23 Jan 2022), 1959, 1960, and 1961, William R. Taylor, 856 Lyons, Lawrence, KS; from State Board of Agriculture Population Schedules and Statistical Rolls, cities (1919-1961) and counties (1953-1979, Kansas State Historical Society, Topeka. *Polk’s Lawrence (Douglas County, Kansas) City Directory 1963* (Kansas City, Mo: R. L. Polk & Company), p. 236, entry for Wm. R. Taylor; digital image, *Ancestry* (<https://www.ancestry.com/search/collections/2469> : accessed 22 Jan 2022) > Kansas > Lawrence > 1963 > Polk’s Lawrence City Directory > image 184.

36. “William Taylor,” *Leavenworth (KS) Times*, 8 Jul 1975. *Find a Grave* (<https://www.findagrave.com> : viewed 5 Dec 2021), memorial 23891787, for William Robert Taylor, (Oak Hill Cemetery, Lawrence, KS), digital image, 10 Jan 2008, by A & R.

## Endnotes for Orin Edward Taylor

37. “U.S., World War II Army Enlistment Records, 1938-1946,” database, *Ancestry* (<https://www.ancestry.com/search/collections/8939> : accessed 1 Jan 2022), Orin E. Taylor, 1 Apr 1941, Ft. Leavenworth, KS; from NARA, World War II Army Enlistment Records, Record Group 64, College Park, MD.

38. Uta Faye Hopkins McCauley, daughter of Elmer D. Hopkins and Emma E. Taylor; Faye remembered the visit.

39. “U.S., National Cemetery Interment Control Forms, 1928-1962,” digital images, *Ancestry* ([www.ancestry.com/search/collections/2590](https://www.ancestry.com/search/collections/2590) : accessed 5 Jan 2013), Orin E. Taylor, serial no. 01295961; from Records of the Office of the Quartermaster General, 1774–1985, Record Group 92, NARA, College Park, MD; 4th Rangers, Co. E.

40. “Lieut. Orin E. Taylor,” *Tonganoxie (KS) Mirror*, 16 Mar 1944, p. 2, col. 6; *Newspapers.com* (<https://www.newspapers.com> : accessed 20 Jan 2022).

41. Kenneth Finlayson and Robert W. Jones, Jr., “Rangers in World War II, Part II, Sicily and Italy,” *Office of the Command Historian, U.S. Army Special Operations History* ([https://arsof-history.org/articles/v3n1\\_rangers\\_wwii\\_page\\_1.html](https://arsof-history.org/articles/v3n1_rangers_wwii_page_1.html) : accessed 24 Jan 2022).

42. “U.S., National Cemetery Interment Control Forms, 1928-1962,” Orin E. Taylor, serial no. 01295961.

43. War Department to William R. Taylor, letter, 2 Nov 1945; original held privately by Sandra Taylor York, CA, scanned copy provided to Linda McCauley, Mt. Vernon, KY.

44. “Sicily-Rome American Cemetery,” *American Battle Monuments Commission* (<https://www.abmc.gov/Sicily-Rome> : accessed 24 Jan 2022).

45. Sandra Taylor York, granddaughter of William Robert Taylor and Nellie Frances Ready.

46. *American Battle Monuments Commission* (<https://www.abmc.gov> : accessed 27 Dec 2021); searchable database of records for those buried in World War I and II overseas military cemeteries; search for Taylors in Sicily-Rome American Cemetery and a general search of the database.

47. *Find a Grave* (<https://www.findagrave.com> : viewed 1 Nov 2007), memorial 3665614, for Orin E. Taylor, (Fort Leavenworth National Cemetery, Fort Leavenworth, KS), digital image, 20 Oct 2007, by Ed n Edna Lane.

48. “U.S., National Cemetery Interment Control Forms, 1928-1962,” Orin E. Taylor, serial no. 01295961. Instructions for form OQMG (Office of Quartermaster General) 315 state the form is sent to next of kin and that QMC form 14 and is annotated when form 315 is returned by the next of kin. The purpose of form 315 is to obtain from the next of kin the birth date, religious emblem, and state to be included on the headstone.

49. Sandra Taylor York to Linda McCauley, emails, Dec 2019, “Documenting the Details Comment: Taylor,” privately held by McCauley.

## Endnotes for Donald

50. “Death of Donald Taylor,” *Leavenworth (KS) Post*, 21 Oct 1921, p. 1, col. 7; digital image, *Newspapers.com* (<https://www.newspapers.com> : accessed 12 Dec 2021).

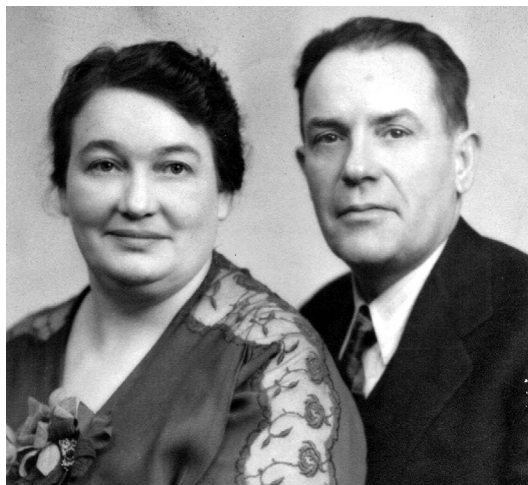
## Endnotes for Verne Kenneth Taylor

51. “Missouri, U.S., Jackson County Marriage Records, 1840-1985,” digital image, *Ancestry* (<https://www.ancestry.com/search/collections/8700>: accessed 11 Jan 2022), Verne Kenneth Taylor and Marjorie Jean BUnds, 29 Aug 1942, Jackson Co., MO; from Marriage Records, Jackson County Clerk, Kansas City.

52. Emma Ewers Taylor Hopkins, “Our Family History” (1969-1977); p. 15, names children. “California, U.S., Divorce Index, 1966-1984,” digital image, *Ancestry* (<https://www.ancestry.com/search/collections/1141> : accessed 11 Jan 2022), Verne K. Taylor and Marjorie J. Bunds, May 1970; from California Divorce Index, 1966-1984, Center for Health Statistics, Dept of Health Services, Sacramento.

53. *Find a Grave* (<https://www.findagrave.com> : viewed 24 Jan 2022), memorial 72058671, for Vern K. Taylor, (Riverside National Cemetery, Riverside, Riverside County, CA), digital image, 6 Sep 2021, by landjnero.

# Elmer Dennis Hopkins and Emma Ewers Taylor



When Emma was eleven years old, her older sister got married at the family home in Mt. Vernon, Kentucky, and everyone cried. Emma decided right then that she would elope when she got married to avoid all that crying. Nine years later, on 11 October 1920, Emma Ewers Taylor and Elmer Dennis Hopkins eloped to Jellico, Tennessee.<sup>1</sup>

Elmer worked for the Louisville and Nashville Railroad (L&N) out of Corbin, Kentucky. Emma worked as an assistant cashier and bookkeeper for Peoples Bank in Mt. Vernon. She went home for lunch that day, but instead of returning to work, she and Elmer took a taxi to nearby Wildie to catch the train to Jellico. They did not want to take a chance of someone seeing them board the train in Mt. Vernon.<sup>2</sup>

A justice of the peace performed the ceremony in a furniture store with just one witness.<sup>3</sup> Emma wore a blue suit with a white beaded georgette blouse.<sup>4</sup> Afterward, Emma and Elmer had supper at a hotel in Jellico, then caught the train to Corbin, where Elmer had already bought a house. Emma left a special delivery letter to be delivered to her mother about the time she would have gotten home from work. She told her she would be married by the time she read it. Her younger brother told her later that there was “weeping and wailing,” and Emma was glad she missed that.<sup>5</sup>

Her mother sent a letter the next day inviting them to come for a visit. On the third day of their honeymoon, Emma and Elmer went to Mt. Vernon. Her mother cooked a big supper and had a nice cake, and Emma appreciated that no one cried.<sup>6</sup> Elmer always claimed he asked John Taylor to forgive him for running off to marry his daughter and promised, if forgiven, he would never do it again.<sup>7</sup> The next day, they visited Elmer’s family at Gum Sulphur, near Brodhead, before returning to their new home in Corbin.<sup>8</sup>

Emma had bought sheets, linens, and other household items ahead of time and kept them hidden at the bank. She bought a trunk to take her things home with her and later moved her piano.<sup>9</sup>

## Emma

Emma was born on 24 October 1900 at her parent's home near Fairground Hill on West Main Street in Mt. Vernon.<sup>10</sup> She was the first child born to John Cook Taylor and his third wife, Emma Jane Owens. John had two daughters, Gracie and Susie, and one son, Bill, from previous marriages. Emma's brother Hartford was born in 1905 and her sister Anna Rose in 1918.<sup>11</sup>

When Emma was two years old, she fell out a door and landed on a sharp ax, cutting a big gash in her hip. There were no hospitals, and the local doctor was not nearby. Emma Jane took her to an old neighbor woman who poured turpentine in the gash and filled it with brown sugar to stop the bleeding. This worked, and Emma's hip healed.<sup>12</sup>

Home remedies were common during Emma's childhood. Her mother would give a spoonful of sugar with coal oil in it to stop the croup. She also believed in wearing a little sack of asafetida around your neck to keep diseases away. Emma remembered being teased by kids at school because of the potent smell.<sup>13</sup>

Emma started school at seven, attending Mt. Vernon Graded and High School, also known as the free or county school. She finished the 3rd grade that year. Her teacher was Miranda McKenzie, and Emma claimed she was the teacher's pet. The next year, her teacher was Mrs. Mat Ballard, whom Emma didn't like as much. One day, Mrs. Ballard made her stay in during lunch, which did not set well with her father. He enrolled Emma in a "pay" school being taught by Miss Ida Mae Adams. Emma attended that school for two years before returning to Mt. Vernon Graded and High School.<sup>14</sup>

When she was nine years old, Emma took pneumonia. She was very sick, and the family even thought she might die. Her father would bring her a present every day while she was sick. Since there were few toys in those days, her gifts included a sugar bowl, cream pitcher, and a woman's purse.<sup>15</sup>

During Emma's childhood, the family moved several times in and around Mt. Vernon. In 1905, they moved from the house where she was born to a large two-story house in the center of town. Around 1911, they moved back to West Main Street to a house across the street from their previous house. They next lived in a house on Crawford Street, behind what is now the Rockcastle County School Board building. That house burned before 1920.<sup>16</sup> After the fire, they moved in with Susie and her family on West Main Street.<sup>17</sup> From there, they moved to a two-family house down the street from Susie and across the street from the First Christian Church.<sup>18</sup>

Emma played with dolls until she was 12 years old. She named her favorites Theodocia and Doris. She also enjoyed singing and always wanted a piano or organ. Emma would put a chair in front of her and pretend to play the piano for hours at a time. When she was a teenager, her mother bought her a second hand organ. Emma Jane sewed for a girl who gave Emma lessons in return.<sup>19</sup>

Emma enjoyed visiting family as a child. She never knew her Taylor grandparents, who died before she was born. But her Aunt Lou, Aunt Nannie, and Uncle Bob lived in their house near Renfro Valley, and she visited them often. She remembered that Aunt Lou was an excellent cook and had soft feather beds.<sup>20</sup>

Emma only had a short time with her grandmother Owens, who died when she was about eight years old, but her grandfather Owens lived until she was nineteen. Emma loved spending time at her Uncle Dave and Aunt Ida Owens's house at Freedom, because they had five daughters, Sallie, Ollie, Myrtle, Mary Ellen, and Dolly. They would have candy-pulling parties when she visited them.<sup>21</sup>

Emma was always an excellent student. She graduated from high school at age sixteen, always made As, and was the youngest person in her class. Some of her classes were Latin, French, algebra, geometry, botany,

physics, chemistry, English, history, and domestic science (home economics). She went through high school without missing a day or even being tardy.<sup>22</sup>

Emma wanted to be a teacher, but at sixteen, she was not old enough to take the exam. College was not a requirement for teaching, but anyone interested had to pass the teacher's examination. Some people went to normal school after high school to prepare for the exam, but Emma was sure she could pass it as soon as she was old enough. In the meantime, she went to work at the Mt. Vernon Post Office.<sup>23</sup>

As soon as she was old enough, Emma took and passed the teacher's exam, scoring a first-class certificate. She started teaching school in July 1918 at Maywood in neighboring Lincoln County before she was eighteen years old. Her father hired someone with an old rattletrap car to take her to Lincoln County.<sup>24</sup>

To be close to the school, Emma boarded with a local family named Jackson from Michigan. Emma paid them \$12 a month for room and board. They had five children and a nice house. They also had a Victrola and records for entertainment. Emma's room was a "davenport" in the parlor. It took Emma a while to adjust to Mrs. Jackson's cooking, such as green beans cooked in milk, which differed from what her mother fixed at home.<sup>25</sup>

Emma walked to the school from the Jackson's house. On her first day, the school trustee went with her to introduce her to the students, who covered first through eighth grades. Emma described the schoolhouse as dismal looking. It was one room with two outside toilets. Besides teaching, her responsibilities included cleaning and building a fire, and she earned \$48 a month. The boys would bring kindling and carry in coal. They also carried water in a bucket, and everyone drank from the same dipper. There was a long seat in the front for recitations. Some old pictures, a flag, and a quart jar for flowers were the décor of the room, but there was no paint on the walls. Emma had a little bell that she bought for 25¢.<sup>26</sup>

While she was teaching school, Emma bought a piano, which was one of her most prized possessions. She took lessons for about three months and learned to play songs like "Home Sweet Home," "Syncopated Time," and "The March of the Sleepy Heads."<sup>27</sup>

As the World War ended in the fall of 1918, the influenza pandemic was getting started and would last through the next spring. In Feb 1919, the schools closed, and Emma returned home. She never taught full time again, although she later did some substitute teaching after her children were in school.<sup>28</sup>

When Emma returned home from Lincoln County, she went back to work at the post office. Many people were suffering from the flu, including the postmaster. The assistant postmaster had left for the Navy, so Emma ended up running the post office alone at eighteen years old. People would come in to get their mail and die within a day or two. Somehow, Emma avoided taking the flu that killed 675,000 people in the U.S. and 50 million people worldwide.<sup>29</sup>

## Elmer

Elmer was born on 2 April 1894 in Wallins Creek, Kentucky, to James Arton Hopkins and Lucinda Howard.<sup>30</sup> Jim and Cindy had nine other children.<sup>31</sup> When Elmer was about seven years old, the family moved from Harlan County to a farm near Brodhead in Rockcastle County.<sup>32</sup> The Hopkins children, including Elmer, attended Red Bud School, which was on Rose Hill Road about three miles from their house.<sup>33</sup> Elmer only went to school a few years, probably not more than 5th grade.<sup>34</sup>

Elmer joined the U.S. Army on 4 December 1911 at Middlesboro, Kentucky, and served three years. He served in Troop E of the 15th Cavalry Regiment. In January 1914, he took part in interning the Mexican



Federal Army at Ft. Bliss, Texas, after Pancho Villa and his army drove them out of Ojinaga, Mexico. Elmer received an honorable discharge on 3 December 1914 at Ft. Bliss.<sup>35</sup>

On 15 December 1915, Elmer went to work for the Louisville and Nashville Railroad (L&N) out of Corbin.<sup>36</sup> In January 1918, the Cumberland River flooded in Harlan and Bell counties where L&N ran hauling coal out of the mountains. On the 28 January, engine 1302 and her crew ended up in the river. Elmer was the middle brakeman on that crew. Over 100 years later, L&N Magazine published “Thirteen-Two’s in the River at Tremont!...” describing the wreck.<sup>37</sup>

“As the train crawled around a sharp right-hand curve near Tremont, the engine, tender, and two or three cars rolled over into the rampaging river on the fireman’s side. Bathed in the oil headlight’s dim beam, the track had appeared passable. Tragically, the riverbank and roadbed beneath it had been hidden by the rushing, relentless water and had severely eroded away.”<sup>38</sup>

Elmer had been riding in the caboose but had traded places with the head brakeman at Wallins to allow him to dry out in the caboose. Elmer almost drowned and suffered a broken leg, but he got out a window and swam to safety. The fireman, Bob Hocker, was pinned in the wreckage and drowned. The rest of the six-man crew survived.<sup>39</sup>

Less than four months later, Elmer joined the U.S. Army for a second time. He was inducted on 24 May 1918 at Mt. Vernon. He was stationed in France from 6 August 1918 to 28 May 1919.<sup>40</sup> Elmer returned from France in May 1919, sailing on the 18th from St. Nazaire onboard the U.S.S. Henry R. Mallory. The ship arrived in Brooklyn, New York, on the 28th.<sup>41</sup> He received a second honorable discharge on 12 June 1919 at Camp Zachary Taylor, Kentucky, and returned to work for L&N.<sup>42</sup>

## Elmer & Emma

The house Elmer bought in Corbin was on Bryant Street, in the part of Corbin that is in Knox County. The four-room house had shade trees in the yard and a garden. Elmer furnished it before their wedding with a dining table, six chairs, a rocker, kitchen cabinet, cook stove, bed, and dresser. After the wedding, they bought a couch, living room chair, rugs, a washstand, and a few other things. They had that dining room table for the rest of their lives.<sup>43</sup>

Emma claimed she could not boil water when she got married, even though her mother was a wonderful cook. She took a cookbook with her when she left Mt. Vernon to get married. The first biscuits she ever made were hard as rocks, but Elmer bragged about them. Emma credited him with teaching her how to do plain cooking, and she learned more from cookbooks.<sup>44</sup>

While they lived in Corbin, Elmer had to work out of Cumberland for a short time. They took a few things and set up “light housekeeping” there for six months, then returned to Corbin.<sup>45</sup>

The first of their four daughters, Edna Ewers, was born on 28 August 1921 at Emma’s parents’ home in Mt. Vernon. They moved to Shonn (now Loyall) in Harlan County, Kentucky, in February 1924 and their second daughter, Ruby Marie, was born there on 26 February.<sup>46</sup>

When they moved to Shonn, the streets were pure mud. They moved their things on the train and then hauled them in a wagon to their house. There were no telephones, but the grocery man would come to the house to take orders and then deliver the groceries later in the day in a wagon. The family moved three times before building a house on the southwest corner of Johnie and Mapother Streets. They moved into their new house in Apr 1925.<sup>47</sup>

A few months later, Ruby died on 28 October after being sick for fourteen days with diphtheria and scarlet fever.<sup>48</sup> Ruby was buried in Elmwood Cemetery in Mt. Vernon.<sup>49</sup>

After Ruby's death, they moved back to their house in Corbin in December 1925. Elmer and Emma's third child, Helen Virginia, was born there the next year.<sup>50</sup> They stayed in Corbin until June 1927, when they returned to Shonn and the house on Johnie Street.<sup>51</sup> Their fourth and last child, Uta Faye, was born in Shonn in 1930.<sup>52</sup>

All four children were born at home. A doctor came to the house and stayed several hours for the deliveries. Two or three neighbor woman came in to help the doctor, who charge \$25.00. Emma had someone stay with her a month before and after each child was born. She said she believed in being waited on then.<sup>53</sup>

When the girls were little, Emma bought a sewing machine, learned to sew, and made most of their clothes. Sometimes she would be in a hurry to finish a dress. Instead of putting in a zipper, she would sew the dress up on one of them and finish it later. She also raised a sizeable garden every summer and canned 400-500 quarts of vegetables and kept a cow and bees for milk and honey.<sup>54</sup>

On 18 December 1932, Elmer bought a seventy-five acre farm with a small house at Buckeye, about a mile and a half from Mt. Vernon.<sup>55</sup> He bought the farm for Emma's parents.<sup>56</sup> Elmer bought two pieces of property in Mt. Vernon in 1938. One property ran from Highway 150 up Town Hill.<sup>57</sup> Elmer had five small rent houses built on Town Hill. About 1952, he had a service station built on the lot fronting Hwy 150 and talked his son-in-law David McCauley into moving from Louisville to Mt. Vernon to run it.<sup>58</sup> The other property was on West Main Street, across the street from First Christian Church.<sup>59</sup> That property had two duplexes, which he also rented. Emma's parents had lived in one of the duplexes around 1920, renting from the previous owner. When Emma's father's health deteriorated in the 1940s, Elmer sold the Buckeye farm and moved the Taylors back to one of the duplexes. Emma's mother collected the rent from both properties for him until she died in 1968.<sup>60</sup>

In 1935 and 1936, Elmer was sick for about eighteen months and could not work.<sup>61</sup> Doctors could not determine what was wrong with him, but his appendix eventually ruptured. He spent a long time at the hospital in London, Kentucky. Doctors were not sure he would survive, but he recovered and returned to work at L&N.<sup>62</sup>

Emma took and passed the postmaster test and on 4 March 1937 received an appointment as postmaster for Loyall.<sup>63</sup> With her commission signed on 31 March, Emma assumed charge of the post office on 4 April.<sup>64</sup> She remained in that job until September 1941.<sup>65</sup> During that time, her sister Gracie lived with the family to take care of the girls while Emma worked.<sup>66</sup> This was the first time since her marriage that Emma had worked outside her home. She later ran a restaurant near the Loyall school for a year, substitute taught for several years, and kept books for a mine they had part-ownership in for about three years in the 1940s.<sup>67</sup>

The United States had remained neutral in the War in Europe that started in 1939 until Japan attacked Pearl Harbor on 7 Dec 1941. By early 1942, rationing began. Emma had worried that rationing might happen months before it did. She bought supplies of dried beans, sugar, and flour, which she stored in lard cans hidden behind the piano.<sup>68</sup>

When the girls were growing up, the family traveled in the summers to visit family. Elmer's parents had moved to Blanchester, Ohio, about 1923 and all of his siblings, except Lige, left Kentucky. His brothers Lum and Grant lived near their parents in Ohio and brothers Henry and Berry lived in Detroit and Flint, Michigan. After his brother John retired from the U.S. Army, he and their sister Lula lived in Tampa, Florida. Elmer's brother Doc and Emma's brother Hartford both lived in Chicago. Emma and the girls went to the

Chicago World's Fair in both 1933 and 1934. They also made trips to Niagara Falls, St. Louis, Missouri, and Canada.<sup>69</sup>

Since Elmer worked for the L&N, the family could get passes to ride the train. Emma and the girls would take the train to Mt. Vernon to visit her parents or to Louisville to shop. Some of those trips to visit family in Chicago, Detroit, and Tampa were made by train. Sometimes they took longer trips, including one to New Orleans when they slept in Pullman berths. Other train trips Emma took included Washington, D.C., Boston, New York, and Portland, Maine.<sup>70</sup>

Emma joined the Loyall Church of Christ in 1930 and taught the Senior Ladies' Sunday School Class for 25 years. She was also a member of the Ladies Auxiliary at the church for many years.<sup>71</sup>

Elmer became a Jehovah's Witness in 1937.<sup>72</sup> He traveled around the country to attend many of the church's annual conventions. Sometimes he took the whole family. Emma and the girls were not interested in spending all day at the convention center listening to the program. They would skip out to go shopping and sight-seeing and meet up with Elmer later, giving him the impression they had been there all day.<sup>73</sup>

In June 1940, Elmer and five other area Jehovah's Witnesses were arrested in Harlan County and charged with sedition. They were held on bonds fixed at \$10,000 each for distributing un-American literature, which promoted the religion's tenets against saluting the flag and in favor of a theocratic government. If convicted, the charges provided for prison terms of up to twenty-one years, fines up to \$10,000, or both. The other five arrested were S. F. Lehman and M. L. Lehman of Bell County and L. E. Carr, Louis Beeler, and Elihu Hurst of Harlan. The defense's legal team included attorneys from Brooklyn, Atlanta, Cincinnati, and Harlan.<sup>74</sup>

Elmer was released on bond, but was again arrested on 11 July. This arrest, on similar charges, followed a door-to-door campaign on 6 July distributing literature published by the Watchtower Bible and Tract Society of New York across the city.<sup>75</sup> These charges were dismissed on 2 August, but he remained under \$10,000 bond for the original charges.<sup>76</sup>

The defense filed a petition asking the Court of Appeals to free the men, declaring they had been unlawfully held to the grand jury. On 30 July, the Court of Appeals in Frankfort, Kentucky, ruled it lacked jurisdiction to interfere with the jailing of the group. Charges brought before the court included that the six men had been threatened with mob violence and re-arrest again and again. Two attorneys had already withdrawn from the case because of threats. Elmer and Hurst had made bond, but the other four remained in jail. The two attorneys who appeared before the court asking for immediate release of the men said they had also been threatened with being thrown in jail. They insisted their clients had been preaching only the kingdom of God and did not advocate violence or opposition to the government. The Appeals Court recommended they ask the Circuit Judge for an injunction to prevent re-arrests and advised they could return to them if they did not get it.<sup>77</sup>

The grand jury in Harlan County returned indictments against all six on 22 August. Each man's bond was reduced to \$5,000. Their cases were added to the docket for a special term of circuit court to begin on 6 September, but they were never brought to trial.<sup>78</sup>

A preliminary hearing was held in Federal District Court on 21 September 1940 on a complaint brought by the defense. A tentative date of 19 October was set for a three-judge court to hear their request that the sedition law under which they were indicted be declared void. The complaint also asked for an injunction preventing further interference with the distribution of their literature. The complaint asserted that the plaintiffs had been arrested and held on excessive bail for distributing books, magazines and pamphlets designed to further their cause.<sup>79</sup>

On 30 November 1940, Harlan County and state officials agreed before a three-judge federal court in London, Kentucky, to suspend prosecution of the six Jehovah's Witnesses. They reached this agreement after a three-day hearing on a petition filed by the six questioning the constitutionality of the state's anti-sedition law. The court granted the men permission to return to Harlan County and continue distributing their literature in public places. In return, the men agreed to stop making house-to-house calls unless invited.<sup>80</sup>

The three-judge court handed down their final ruling on this matter on 4 June 1941. Their opinion enjoined and restrained Harlan County law enforcement and court officers from arresting, imprisoning, or prosecuting these six men and any other Jehovah's Witnesses on charges that publications of the sect constituted sedition. The judges stated the publications circulated by the Jehovah's Witnesses in Harlan County did not violate any law, statute, or ordinance of the State of Kentucky. They said the plaintiffs and all others may distribute the sect's materials in a peaceable and orderly manner. The ruling further stated that the men were not guilty of sedition under Chapter 100 of the Acts of the Legislature of Kentucky, as charged by the Harlan officials. Since the statute did not apply in this case, the court felt no necessity to rule on its constitutionality.<sup>81</sup>

Edna married Aubrey E. Chesnut, Jr. on 19 June 1943 in Tampa, Florida, where Aubrey was stationed in the U.S. Army. Emma and Edna took the train to Tampa for the wedding, which was held at Elmer's brother John's home. Emma returned home on the train by herself and said she cried all the way.<sup>82</sup>

Over the years, Elmer and Emma had several cars. The first three were a 1925 Model T Ford, a 1927 Dodge Touring, and a 1930 Erskine Sedan. Other cars included two more Fords, two Pontiacs, a Buick, a Chevrolet, a Plymouth, and a Volkswagen.<sup>83</sup>

In the summer of 1949, Elmer bought a new Ford at a dealer in Harlan. He called home and told Faye that if she would catch the bus to Harlan, she could be the first one to drive it. And she did. Elmer made a big production of presenting Emma, Helen, and Faye with a key to the new car. The next day, after he went to work, Emma was going to drive the new car to the grocery. But when she and the girls got to the garage, they discovered Elmer had put a new padlock on the door and none of them had that key. Not to be outdone, Emma broke the lock with a hammer. She got a key to the next lock that went on the garage door.<sup>84</sup>

On 18 Feb 1950, Elmer and Emma's youngest daughter, Faye, married David Hankins McCauley at the Loyall Church of Christ. Emma held both the rehearsal dinner and reception at home. Faye and David lived in several towns in Tennessee and in Middlesboro and Louisville, Kentucky, before settling in Mt. Vernon in 1952. They had four children.<sup>85</sup>

Their daughter Helen married Rex Yonce in 1954. Emma made her wedding gown and veil, the four bridesmaid's dresses, and the flower girl's dress. Helen and Rex lived across the street from Elmer and Emma and had one child.<sup>86</sup>

Emma joined the Loyall Parent Teacher Association (PTA) in 1927 and remained active in the organization long after her children were out of school. She served two years as local president in 1944-45, three years as District President in 1954-1957, and six years on the Kentucky PTA State Board from 1954 to 1960. She attended national PTA conventions in Cincinnati and San Francisco and all the state conventions while she was on the board. Emma was a delegate to the Kentucky White House Conference on Education held in Louisville in 1955 and the Kentucky Governor's Conference on Education in 1956.<sup>87</sup> In 1965, the Kentucky superintendent of public instruction appointed her to a twenty-two member citizens advisory committee to study Kentucky's foundation program for education.<sup>88</sup>

In 1930, Emma joined the Loyall Homemaker's Club and held the office of county president twice. She served as vice president of the Harlan Civic Club and was a member of the Harlan Business and Professional Women Club (BPW). They named her BPW Club Senior Citizen of the Month in December 1976.<sup>89</sup>

Emma took only one airplane trip, flying to San Francisco to attend a national PTA convention in 1956. She enjoyed the flight out but had a problem on the return flight. Emma had trouble breathing, so went to the restroom, took off her corset, and left it there. The stewardess noticed she was having a problem and put her on oxygen for two hours. When they landed in Kansas City to change planes, she handed Emma a brown paper sack with her corset inside. She had to change planes again in Chicago and the plane was late. Emma feared she would not get back to Kentucky in time to see two of her grandchildren in a dance recital that evening. Elmer was waiting for her at the Louisville airport, and they made it to the recital in Mt. Vernon. Emma never wanted to fly again.<sup>90</sup> Elmer never flew. His stock comment about it was that he had "never been in that big a hurry."<sup>91</sup>

Elmer retired from the L&N Railroad on 28 April 1960.<sup>92</sup> His three daughters, six grandchildren, and Emma "jumped" the train and rode part of the way on the caboose for his last run. In reality, the train slowed to a stop at two points during the run. The family boarded at the first stop and disembarked at the second, because they could not go into the depot with the train.<sup>93</sup>

After Elmer retired, he and Emma took several trips west to visit his brother Grant in Tuscon, Arizona, and her brother Bill in Kansas. They drove to Tuscon several times but also made a few trips by train. While in Arizona, they also visited Los Angeles and Juarez, Mexico.<sup>94</sup>

Elmer and Emma started making a trip to Mt. Vernon, where Faye and her family lived, most every week. After Elmer's retirement, they would leave home on Monday morning and stop in Barbourville to visit Edna. They often had lunch that Emma brought. Then they went on to Mt. Vernon, where they spent the night at Faye's before returning home the next day. Emma's mother and sisters Gracie and Susie and Elmer's brother Lige were still living when they started this routine and they visited with them as well. Elmer often took a drive out by "the old home place" where he had spent most of his childhood while they were there.<sup>95</sup>

Emma was diagnosed with type II diabetes when she was in her early fifties. She took medication to control it and later developed high blood pressure.<sup>96</sup> When she was sixty-nine years old, Emma was hospitalized for the first time because both her diabetes and blood pressure were out of control. Two years later, she had gall bladder surgery and, in January 1977, she had surgery for colon cancer.<sup>97</sup>

In April 1977, floodwater reached thirty-eight inches deep in Elmer and Emma's house. It was the first time water got more than a few inches deep in the yard and basement in the fifty-two years they had lived there. However, when six inches of rain fell in a short time, the Cumberland River rose fast. They had to grab a few necessities and head for higher ground, with no time to think about saving anything. Emma and Elmer and many others sheltered at the Loyall Church of Christ, which was up hill a few blocks from their house.<sup>98</sup>

They lost almost everything, including irreplaceable books, papers, pictures, and newspaper clippings. Emma's prized piano, which was by then at her daughter's house across the street, was also a casualty of the flood. Emma had just had surgery for colon cancer three months earlier and could not do much. She went to Mt. Vernon to stay with Faye for two weeks while the worst of the clean up was going on. When she returned to Loyall, she and Elmer lived in a trailer for about six weeks until the house was livable again. As part of the renovation, they had the house raised seven feet off the ground.<sup>99</sup>



Emma died of a heart attack on 19 January 1978 at the Harlan Appalachian Regional Hospital during one of the worst snowstorms on record in Kentucky.<sup>100</sup> She was seventy-seven years old. Her funeral was held on 22 January at Loyall Funeral Home with Rev. Bob Hull of Loyall Church of Christ officiating.<sup>101</sup>

Following the funeral, the family made the 100-mile trip over partially cleared highways with scrapped snow piled several feet high along the shoulder of the road to Mt. Vernon for her burial. Because of the weather, many of Emma's cousins from Rockcastle County had not made the trip to Loyall. When the funeral caravan arrived in Mt. Vernon, a short visitation was held at Cox Funeral Home Chapel before the burial at Elmwood Cemetery. Emma was laid to rest beside Ruby.<sup>102</sup>

In December 1976, Elmer was diagnosed with prostate cancer, which led to his death three and a half years later. He died on 26 May 1980 at the Harlan Appalachian Regional Hospital. Elmer was eighty-six years old.<sup>103</sup> His funeral was held on 29 May at the Loyall Funeral Home with Jim Copland of the Kingdom Hall of Jehovah's Witnesses officiating.<sup>104</sup> Elmer was buried in Elmwood Cemetery in Mt. Vernon beside Emma.<sup>105</sup>

## Edna Ewers Hopkins

Edna weighed nine and a half lbs. when she was born at noon on 28 August 1921 at Emma's parents' home in Mt. Vernon.<sup>106</sup> She was baptized at the Loyall Church of Christ in 1934.<sup>107</sup> Edna played clarinet in the band at Loyall High School and graduated in 1939.<sup>108</sup> In 1942, she graduated from Union College in Barbourville, Knox County, Kentucky.<sup>109</sup>

While at Union, Edna met Aubrey Edgar Chesnut, Jr., son of Aubrey Edgar Chesnut, Sr. and Jennie Brown. Aubrey was born on 27 April 1921 in Tuttle, Knox County, Kentucky, a community on the Knox and Laurel County line.<sup>110</sup> By 1930, the family lived at 333 Catron Avenue in Barbourville, the home his parents kept for the rest of their lives.<sup>111</sup>

After graduation from Union, Edna returned home and taught school in Harlan County for the 1942-43 school year. Her first assignment was a two-room school at Putney, a community between Harlan and Cumberland. She soon transferred to Loyall High School as the business/commerce teacher.<sup>112</sup>

Aubrey joined the U.S. Army on 24 September 1942 in Cincinnati.<sup>113</sup> Prior to that, he attended Union College and Bowling Green Business University and worked at Wright Field in Dayton, Ohio. Aubrey was stationed at Drew Field in Tampa, Florida, when he and Edna decided to get married.<sup>114</sup>

Emma made Edna's wedding dress, and the two of them took the train to Florida. Elmer's brother John was retired from the Army and lived in Tampa. Edna and Aubrey got married at his house at 802 East Hanna Street in Hillsborough County on 19 June 1943.<sup>115</sup> Edna wore a simple string of pearls with the long white silk dress, which had a sweetheart neckline, long sleeves, and a floor length bouffant skirt. Poinciana flowers decorated the house and the mother of the bride wore a black dress trimmed in blue.<sup>116</sup>

Several months later, when Aubrey went overseas, Edna returned to Loyall to stay until he came home.<sup>117</sup> She also returned to teaching.<sup>118</sup> Edna and Aubrey's oldest son was born while she was living with her parents. He was eighteen months old when his father returned from the war. Edna and Aubrey settled in his hometown of Barbourville, in Knox County, about an hour away from Loyall. They had two more sons.<sup>119</sup>

Aubrey worked for the U.S. Postal Service, eventually becoming postmaster at Barbourville. Edna did substitute teaching in Knox County but never return to full time teaching.<sup>120</sup> Her father-in-law ran Chesnut Tax Service, and she worked with him. Edna eventually took over the business when Aubrey Sr. retired and ran it until she retired.<sup>121</sup>

After retirement, Edna and Aubrey moved to St. Cloud in Osceola County, Florida.<sup>122</sup> They returned to Kentucky in 1993.<sup>123</sup>

Aubrey died on 25 January 1996 in Barbourville.<sup>124</sup> Edna died there on 11 October 2016.<sup>125</sup> Both funerals were held at Knox Funeral Home in Barbourville, and they were both buried in Barbourville Cemetery.<sup>126</sup>

## Ruby Marie Hopkins

Blonde and blue-eyed Ruby was born at 8:00 a.m. on 26 February 1924 at Shonn. She weighed eleven lbs.<sup>127</sup> Ruby lived one year, eight months, and two days.<sup>128</sup> Emma said she was born to be an angel, but she was grateful God let them have her, even for such a short time.<sup>129</sup>

Ruby became ill with scarlet fever and dyphteria on 14 October 1925. She died at home on 28 October.<sup>130</sup> Her body was taken to Mt. Vernon. Reverend Phillip Bornwasser of First Christian Church in Mt. Vernon officiated at her funeral, held on 30 October at the home of Emma's parents. Ruby was buried in Elmwood Cemetery in Mt. Vernon.<sup>131</sup>

Note: Elmer and Emma's two younger daughters are still living. Their stories are not included for privacy reasons.

# Endnotes for Emma Ewers Taylor & Elmer Dennis Hopkins

1. Emma Ewers Taylor Hopkins, "Memoir" (KY, Loyall, 1977), privately held by Faye Hopkins McCauley, Mt. Vernon, KY; Faye is Emma's daughter.
2. Emma Ewers Taylor Hopkins, "Memoir" (1977).
3. Emma Ewers Taylor Hopkins, "Memoir" (1977).
4. Emma Ewers Taylor Hopkins, "Our Family History" (KY, Loyall, 1977), scanned copy of fill-in-the-blanks family history book privately held by Linda F. McCauley, Mt. Vernon, KY.
5. Emma Ewers Taylor Hopkins, "Memoir" (1977).
6. Emma Ewers Taylor Hopkins, "Memoir" (1977).
7. Elmer Dennis Hopkins, told many times to the author and other family.
8. Emma Ewers Taylor Hopkins, "Memoir" (1977).
9. Emma Ewers Taylor Hopkins, "Memoir" (1977).
10. KY Cabinet for Health and Family Services, delayed birth certificate, certificate no. 451627 (issued 1960), Emma Ewers Taylor; Office of Vital Statistics, Frankfort. Emma Ewers Taylor Hopkins, "Memoir" (1977); location of house
11. Emma Ewers Taylor Hopkins, "Memoir" (1977).
12. Emma Ewers Taylor Hopkins, "Memoir" (1977).
13. Emma Ewers Taylor Hopkins, "Memoir" (1977).
14. Emma Ewers Taylor Hopkins, "Memoir" (1977).
15. Emma Ewers Taylor Hopkins, "Memoir" (1977).
16. Emma Ewers Taylor Hopkins, "Memoir" (1977).
17. Uta Faye Hopkins McCauley, daughter of Elmer D. Hopkins and Emma E. Taylor, mother of author.
18. Emma Ewers Taylor Hopkins, "Memoir" (1977).
19. Emma Ewers Taylor Hopkins, "Memoir" (1977).
20. Emma Ewers Taylor Hopkins, "Memoir" (1977).
21. Emma Ewers Taylor Hopkins, "Memoir" (1977).
22. Emma Ewers Taylor Hopkins, "Memoir" (1977).
23. Emma Ewers Taylor Hopkins, "Memoir" (1977).
24. Emma Ewers Taylor Hopkins, "Memoir" (1977).
25. Emma Ewers Taylor Hopkins, "Memoir" (1977).
26. Emma Ewers Taylor Hopkins, "Memoir" (1977).
27. Emma Ewers Taylor Hopkins, "Memoir" (1977).
28. Emma Ewers Taylor Hopkins, "Memoir" (1977).
29. Emma Ewers Taylor Hopkins, "Memoir" (1977). "History of 1918 Flu Pandemic," *Centers for Disease Control and Prevention* (<https://www.cdc.gov/flu/pandemic-resources/1918-commemoration/1918-pandemic-history.htm> : accessed 5 Dec 2021), last reviewed 21 Mar 2018; flu statistics.
30. KY Cabinet for Health and Family Services, death certificate no. 13870 (1980), Elmer D. Hopkins; Office of Vital Statistics, Frankfort; birth date and parents. Emma Ewers Taylor Hopkins, "Our Family History" (1977), p. 8; birth place.
31. Emma Ewers Taylor Hopkins, "Our Family History" (1977), p. 8 & 10.
32. 1900 U.S. census, Harlan Co., KY, population schedule, Wallins Creek, enumeration district (ED) 54, sheet 9A), dwelling 147, family 147, James Hopkins; digital image, *Ancestry* (<https://www.ancestry.com/search/collections/7602> : accessed 22 Aug 2009); from NARA microfilm T623; in Wallins when Elmer was six. Gerald Hopkins to Linda McCauley, letter, 28 Feb 2004; privately held by McCauley; Elmer's brother (Gerald's father) born 1902 in Rockcastle County.
33. Elmer Dennis Hopkins, told to the author.

34. 1940 U.S. census, Harlan Co., KY, population schedule, Loyall, enumeration district (ED) 48-4, sheet 15A, household 266, Elmer D. Hopkins; digital image, *Ancestry* (<https://www.ancestry.com/search/collections/2442> : accessed 13 Feb 2021); from NARA microfilm 627, roll 1313; highest grade completed 5.
35. Army of the United States, Elmer D. Hopkins, honorable discharge 3 Dec 1914, scanned copy in possession of Linda McCauley, Mt. Vernon, KY, scanned from original held by Edna Hopkins (Elmer's daughter) now deceased.
36. Emma Ewers Taylor Hopkins, "Our Family History" (1977), p. 39.
37. Greg Whitaker, "Thirteen-Two's in the River at Tremont!...", *Lebanon Magazine* (Jun 2019); p. 4-9.
38. Whitaker, "Thirteen-Two's in the River at Tremont!...", p. 4-9.
39. Whitaker, "Thirteen-Two's in the River at Tremont!...", p. 4-9.
40. Honorable Discharge from The United States Army, Elmer D. Hopkins, 12 Jun 1919, scanned copy in possession of Linda McCauley, Mt. Vernon, KY, scanned from original held by Edna Hopkins (Elmer's daughter) now deceased.
41. "U.S., Army Transport Service Arriving and Departing Passenger Lists, 1910-1939," digital image, *Ancestry* (<https://www.ancestry.com/search/collections/61174> : accessed 10 Jan 2021), Incoming > Henry R. Mallory > 13 Apr 1918-28 May 1919 > image 798, entry for Elmer D. Hopkins, serial no. 3095652; from Records of the Office of the Quartermaster General, 1774-1985, Record Group 92, NARA, College Park, MD.
42. Honorable Discharge from The United States Army, Elmer D. Hopkins, 12 Jun 1919.
43. Emma Ewers Taylor Hopkins, "Mémoir" (1977).
44. Emma Ewers Taylor Hopkins, "Mémoir" (1977).
45. Emma Ewers Taylor Hopkins, "Mémoir" (1977). Emma Ewers Taylor Hopkins, "Our Family History" (1977), p. 38.
46. Emma Ewers Taylor Hopkins, "Mémoir" (1977).
47. Emma Ewers Taylor Hopkins, "Mémoir" (1977).
48. "Kentucky, U.S., Death Records, 1852-1965," digital image, *Ancestry* (<https://www.ancestry.com/search/collections/1222> : accessed 28 Oct 2008), death certificate no. 24086 (1925), Ruby Marie Hopkins; from microfilm 994027-994058, KY Dept. for Libraries and Archives, Frankfort.
49. Elmwood Cemetery (Mt. Vernon, Rockcastle Co., KY), Ruby Marie Hopkins marker, photographed by Linda McCauley, 20 Mar 2003.
50. Emma Ewers Taylor Hopkins, "Our Family History" (1977), p. 38; when they moved. Emma Ewers Taylor Hopkins, "Mémoir" (1977).
51. Emma Ewers Taylor Hopkins, "Our Family History" (1977), p. 38.
52. Emma Ewers Taylor Hopkins, "Mémoir" (1977).
53. Emma Ewers Taylor Hopkins, "Mémoir" (1977).
54. Emma Ewers Taylor Hopkins, "Mémoir" (1977).
55. Rockcastle Co., KY, Master Commissioner Deed Book 2: 556, Tip Langford to Elmer Hopkins, 18 Dec 1932; Rockcastle Co. Clerk, Mt. Vernon.
56. Uta Faye Hopkins McCauley, daughter of Elmer D. Hopkins and Emma E. Taylor, mother of author.
57. Rockcastle Co., KY, Deed Book 57: 329, Clara Traub & Anna E. Krueger to Elmer Hopkins, 20 Dec 1938; Rockcastle Co. Clerk, Mt. Vernon.
58. Uta Faye Hopkins McCauley, daughter of Elmer D. Hopkins and Emma E. Taylor, mother of author.
59. Rockcastle Co., KY, Deed Book 57: 330, Anna E. Krueger to Elmer Hopkins, 17 Dec 1938; Rockcastle Co. Clerk, Mt. Vernon.
60. Uta Faye Hopkins McCauley, daughter of Elmer D. Hopkins and Emma E. Taylor, mother of author.
61. Emma Ewers Taylor Hopkins, "Mémoir" (1977).
62. Uta Faye Hopkins McCauley, daughter of Elmer D. Hopkins and Emma E. Taylor, mother of author.
63. Emma Ewers Taylor Hopkins, "Mémoir" (1977).

64. "U.S., Appointments of U.S. Postmasters, 1832-1971," digital image, *Ancestry* (<https://www.ancestry.com/search/collections/1932> : accessed 3 Jan 2014), Emma E. Hopkins, Loyall, KY; from NARA microfilm publication M841, Records of the Post Office Department, Record Group 28, NARA, Washington, D.C.
65. Emma Ewers Taylor Hopkins, "Our Family History" (1977), p. 39.
66. Uta Faye Hopkins McCauley, daughter of Elmer D. Hopkins and Emma E. Taylor, mother of author.
67. Emma Ewers Taylor Hopkins, "Our Family History" (1977), p. 39, mine ownership. Emma Ewers Taylor Hopkins, "Memoir" (1977).
68. Uta Faye Hopkins McCauley, daughter of Elmer D. Hopkins and Emma E. Taylor, mother of author.
69. Emma Ewers Taylor Hopkins, "Memoir" (1977).
70. Emma Ewers Taylor Hopkins, "Memoir" (1977). Uta Faye Hopkins McCauley, daughter of Elmer D. Hopkins and Emma E. Taylor, mother of author.
71. Emma Ewers Taylor Hopkins, "Memoir" (1977).
72. Emma Ewers Taylor Hopkins, "Our Family History" (1977), p 32-33.
73. Uta Faye Hopkins McCauley, daughter of Elmer D. Hopkins and Emma E. Taylor, mother of author.
74. "Face Sedition Count in State," *Messenger* (Madisonville, KY), 8 Jun 1940, p. 6, col. 3; digital image, *Newspapers.com* (<https://www.newspapers.com> : accessed 4 Dec 2021). "6 'Witnesses' Held," *Courier-Journal* (Louisville, KY), 8 Jun 1940, p. 11, col. 1; digital image, *Newspapers.com* (<https://www.newspapers.com> : accessed 4 Dec 2021).
75. "Railroader Back in Jail on Sedition," *Harlan (KY) Daily Enterprise*, 11 Jul 1940; copied from microfilm at Bryan W. Whitfield Jr. Public Library, Harlan.
76. "Sedition Charges Against Hopkins Dismissed Today," *Harlan (KY) Daily Enterprise*, 2 Aug 1940; copied from microfilm at Bryan W. Whitfield Jr. Public Library, Harlan.
77. "High Court Lacks Power To Halt Jailing of Jehovah's Witnesses," *Lexington (KY) Herald*, 31 Jul 1940, p. 21, col. 7; digital image, *Newspapers.com* (<https://www.newspapers.com> : accessed 4 Dec 2021).
78. "Indictments Charge Six With Sedition," *Lexington (KY) Herald*, 23 Aug 1940, p. 1, col. 6; digital image, *Newspapers.com* (<https://www.newspapers.com> : accessed 4 Dec 2021).
79. "Three-Judge Court Called," *Lexington (KY) Herald*, 22 Sep 1940, p. 1, col. 1; digital image, *Newspapers.com* (<https://www.newspapers.com> : accessed 4 Dec 2021).
80. "Prosecution of Members of Jehovah's Witnesses Suspended," *Lexington (KY) Herald*, 29 Nov 1940, p. 2, col. 5; digital image, *Newspapers.com* (<https://www.newspapers.com> : accessed 4 Dec 2021). "Jehovah Sect Prosecution Is Suspended," *Courier-Journal* (Louisville, KY), 1 Dec 1940, p. 1, col. 7; digital image, *Newspapers.com* (<https://www.newspapers.com> : accessed 4 Dec 2021).
81. "Sect Triumphs In U.S. Court," *Lexington (KY) Leader*, 4 Jun 1941, p. 17, col. 8; digital image, *Newspapers.com* (<https://www.newspapers.com> : accessed 4 Dec 2021). "Witnesses Freed In Harlan Charge Of Sedition," *Courier-Journal* (Louisville, KY), 5 Jun 1941, p. 10, col. 3; digital image, *Newspapers.com* (<https://www.newspapers.com> : accessed 4 Dec 2021).
82. Emma Ewers Taylor Hopkins, "Memoir" (1977).
83. Emma Ewers Taylor Hopkins, "Our Family History" (1977), p 38.
84. Uta Faye Hopkins McCauley, daughter of Elmer D. Hopkins and Emma E. Taylor, mother of author.
85. Emma Ewers Taylor Hopkins, "Memoir" (1977).
86. Emma Ewers Taylor Hopkins, "Memoir" (1977).
87. Emma Ewers Taylor Hopkins, "Memoir" (1977).
88. "Educator Says Schools Must Adjust To Society," *Courier-Journal* (Louisville, KY), 7 Oct 1965, p. 29, col. 4; digital image, *Newspapers.com* (<https://www.newspapers.com> : accessed 4 Dec 2021).
89. Emma Ewers Taylor Hopkins, "Memoir" (1977).
90. Emma Ewers Taylor Hopkins, "Memoir" (1977).
91. Uta Faye Hopkins McCauley, daughter of Elmer D. Hopkins and Emma E. Taylor, mother of author.
92. Emma Ewers Taylor Hopkins, "Our Family History" (1977), p. 39.



93. Linda F. McCauley, granddaughter of Elmer D. Hopkins and Emma E. Taylor; was present.
94. Emma Ewers Taylor Hopkins, "Memoir" (1977).
95. Linda F. McCauley, granddaughter of Elmer D. Hopkins and Emma E. Taylor.
96. Uta Faye Hopkins McCauley, daughter of Elmer D. Hopkins and Emma E. Taylor, mother of author.
97. Emma Ewers Taylor Hopkins, "Memoir" (1977).
98. Emma Ewers Taylor Hopkins, "Memoir" (1977).
99. Emma Ewers Taylor Hopkins, "Memoir" (1977).
100. KY Cabinet for Health and Family Services, death certificate no. 646 (1978), Emma Hopkins; Office of Vital Statistics, Frankfort. Andy Mead, "Snowfall Creates State of Emergency," *Lexington (KY) Herald*, 18 Jan 1978, p. 1, col. 1; digital image, *Newspapers.com* (<https://www.newspapers.com> : accessed 4 Dec 2021).
101. Mrs. Elmer Hopkins," *Harlan (KY) Daily Enterprise*, 20 Jan 1978, scanned clipping held by Linda F. McCauley, Mt. Vernon, KY, 2005, original saved by Faye Hopkins McCauley.
102. Linda F. McCauley, granddaughter of Elmer D. Hopkins and Emma E. Taylor; was present.
103. KY Cabinet for Health and Family Services, death certificate no. 13870 (1980), Elmer D. Hopkins; Office of Vital Statistics, Frankfort.
104. Elmer Hopkins," *Harlan (KY) Daily Enterprise*, 27 May 1980, scanned clipping held by Linda F. McCauley, Mt. Vernon, KY, 2005, original saved by Faye Hopkins McCauley.
105. Elmwood Cemetery (Mt. Vernon, Rockcastle Co., KY), Emma E. & Elmer D. Hopkins marker, photographed by Linda McCauley, 4 May 2005.

## Endnotes for Edna Ewers Hopkins

106. Emma Ewers Taylor Hopkins, "Our Family History" (1969-1977); p. 16.
107. Emma Ewers Taylor Hopkins, "Our Family History" (1969-1977); p. 32.
108. Uta Faye Hopkins McCauley, daughter of Elmer D. Hopkins and Emma E. Taylor; clarinet.
109. Emma Ewers Taylor Hopkins, "Our Family History" (1969-1977); p. 34 & 35, graduations from high school and college.
110. "U.S., Social Security Applications and Claims Index, 1936–2007," database, *Ancestry* (<https://www.ancestry.com/search/collections/60901> : accessed 2 Feb 2022), Aubrey Edgar Chesnut, Jr., SSN 403-09-2780; from Social Security Applications and Claims, 1936–2007.
111. 1930 U.S. census, Knox Co., KY, population schedule, Barbourville, enumeration district (ED) 61-16, sheet 10A, dwelling 190, family 194, Aubrey Chestnut; digital image, *Ancestry* (<https://www.ancestry.com/search/collections/6224> : accessed 2 Feb 2022); from NARA microfilm T626. Linda F. McCauley, granddaughter of Elmer D. Hopkins and Emma E. Taylor; Chesnuts lived in that house rest of their lives.
112. Uta Faye Hopkins McCauley, daughter of Elmer D. Hopkins and Emma E. Taylor. "Miss Hopkins Recent Bride" and "Loyall Teacher Marries in Florida Ceremony," unidentified newspapers but one was likely the *Harlan (KY) Daily Enterprise* and the other the *Barbourville (KY) Mountain Advocate*, clipping saved by Edna Hopkins Chesnut, scanned clipping provided to Linda F. McCauley, Mt. Vernon, KY, 2005; teaching commerce at Loyall.
113. "U.S., World War II Army Enlistment Records, 1938-1946," database, *Ancestry* (<https://www.ancestry.com/search/collections/8939> : accessed 2 Feb 2022), Aubrey E. Chesnut, Jr., 24 Sep 1942, Cincinnati, OH; from NARA, World War II Army Enlistment Records, Record Group 64, College Park, MD.
114. "Miss Hopkins Recent Bride," "Loyall Teacher Marries in Florida Ceremony," unidentified newspapers.
115. Emma Ewers Taylor Hopkins, "Memoir" (1977). Marriage Certificate, Aubrey Edgar Chesnut, Jr. & Edna Ewers Hopkins, 19 Jun 1943, Tampa, FL; scanned copy privately held by Linda F. McCauley, Mt. Vernon, KY, scanned from original held by Edna Hopkins Chesnut now deceased; date, county, & state.
116. "Miss Hopkins Recent Bride," "Loyall Teacher Marries in Florida Ceremony," unidentified newspapers.
117. Emma Ewers Taylor Hopkins, "Memoir" (1977).
118. Uta Faye Hopkins McCauley, daughter of Elmer D. Hopkins and Emma E. Taylor.

119. Emma Ewers Taylor Hopkins, “Memoir” (1977).
120. Uta Faye Hopkins McCauley, daughter of Elmer D. Hopkins and Emma E. Taylor.
121. Linda F. McCauley, granddaughter of Elmer D. Hopkins and Emma E. Taylor.
122. Linda F. McCauley, granddaughter of Elmer D. Hopkins and Emma E. Taylor.
123. “Obituaries,” *Orlando (FL) Sentinel*, 28 Jan 1996, p. 25, col. 2; digital image, *Newspapers.com* (<https://www.newspapers.com> : accessed 2 Feb 2022).
124. “Obituaries,” *Orlando Sentinel*, 28 Jan 1996; date of death. Linda F. McCauley, granddaughter of Elmer D. Hopkins and Emma E. Taylor; location.
125. “Edna Hopkins Chesnut,” *Legacy.com* (<https://www.legacy.com/obituaries> : accessed 19 Jul 2021); from Knox Funeral Home, Barbourville, KY.
126. Linda F. McCauley, granddaughter of Elmer D. Hopkins and Emma E. Taylor.

## Endnotes for Ruby Marie Hopkins

127. Emma Ewers Taylor Hopkins, “Our Family History” (1969-1977); p. 16.
128. “Kentucky, U.S., Death Records, 1852–1965,” death certificate no. 24086 (1925), Ruby Marie Hopkins.
129. Emma Ewers Taylor Hopkins, “Memoir” (1977).
130. “Kentucky, U.S., Death Records, 1852–1965,” death certificate no. 24086 (1925), Ruby Marie Hopkins.
131. “Little Ruby Marie Hopkins Passes Into The Great Beyond,” Mt. Vernon (KY) Signal, date unknown, scanned clipping held by Linda F. McCauley, Mt. Vernon, KY, 2003, original saved by Emma Hopkins. Linda Ramsey Ashley, *A History of the First Christian Church, Mt. Vernon, Kentucky* (Lexington, KY: privately published, 1975); p. 84, Bornwasser’s first name and affiliation with 1st Christian Church.

# Hartford Conn Taylor



Left: Betty & Hartford; Center: Betty; Right: Hartford

In April 1905, a calendar featuring Hartford, Connecticut, abbreviated Conn., hung on the wall in John and Emma Jane Taylor's house. When their son was born on 11 April, John looked at the calendar and named his son Hartford Conn.<sup>1</sup>

Hartford graduated from Mt. Vernon High School in 1923. He worked for several years as a Post Office clerk before taking a job as bookkeeper at Peoples Bank in Mt. Vernon about 1927.<sup>2</sup> He was also a musician. Hartford, along with friends Karl Davis and Doc Hopkins, could often be found playing music in Davis's barn or John Taylor's blacksmith shop.<sup>3</sup>

Hartford married Elizabeth Josephine "Betty" Mulliner, daughter of Walter E. Mulliner and Edna E. Philbrick, on 9 Nov 1928 in Galesburg, Knox County, Illinois.<sup>4</sup> Betty's parents hosted the afternoon wedding at their home at 409 West North Street in Galesburg. The house was decorated with ferns and yellow chrysanthemums, with yellow as the general color scheme.<sup>5</sup>

Betty was born on 21 Nov 1905 in Quincy, Adams County, Illinois.<sup>6</sup> She attended Langdon School in Mt. Vernon, where she met Hartford. Betty had worked at Langdon as office secretary for two years at the time of their wedding.<sup>7</sup>

Hartford and Betty lived in Mt. Vernon in the early years of their marriage.<sup>8</sup> In 1929, Doc recruited Karl and Hartford to form the Kentucky Crazy Kats. They appeared on local radio and toured with a semi-pro basketball team, playing music during intermission; they also performed on WHAS radio in Louisville, Kentucky.<sup>9</sup>

In 1930, Hartford and Betty moved to Chicago where he, along with Karl and Doc worked for WLS radio. The three of them joined some other musicians to form the Cumberland Ridge Runners. Hartford and Karl were initially called the Renfro Valley Boys but later changed to Karl and Harty. They performed on WLS's National Barn Dance and recorded for the American Record Corporation label. They had hits with songs like "I'm Here to Get My Baby Out of Jail", "The Prisoner's Dream" and "Kentucky". In 1937, Karl and Harty joined the WJJD Suppertime Frolic but returned to WLS in 1947. They amiably dissolved their partnership in 1951.<sup>10</sup> Hartford later worked as a toll booth operator in Chicago.<sup>11</sup>

Hartford and Betty had two children. Their daughter, Betty Conn, was born on 22 August 1929 in Mt. Vernon.<sup>12</sup> Their son was born a few years later after they moved to Illinois.<sup>13</sup>

Hartford died of a stroke on 17 October 1963 at St. Theresa Hospital in Waukegan, Lake County, Illinois. His funeral was held on 20 October at Strang Funeral Chapel with Rev. Corell Hart, pastor of the Wildwood Presbyterian Church, officiating. He was buried in Millburn Cemetery in Waukegan.<sup>14</sup> Betty died on 19 February 2002 in Knoxville, Knox County, Illinois and was also buried in Millburn Cemetery.<sup>15</sup>

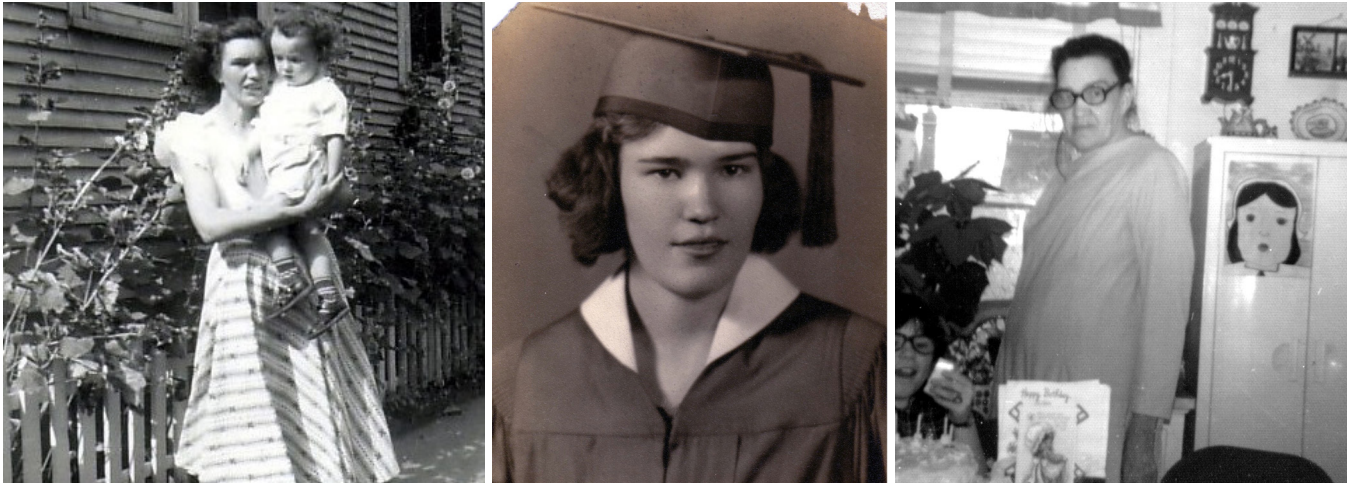
Betty Conn married C. H. Finch, and they had four children.<sup>16</sup> She died on 19 February 2002 in Knoxville, Knox County, Illinois and was buried there in Knoxville Cemetery.<sup>17</sup>

## Endnotes for Hartford Conn Taylor

1. Emma Ewers Taylor Hopkins, "Our Family History" (KY, Loyall, 1969-1977), scanned copy of fill-in-the-blanks family history privately held by Linda F. McCauley, Mt. Vernon, KY; Linda is Emma's granddaughter; p. 14, Hartford's birthdate. Emma Ewers Taylor Hopkins, daughter of John Cook Taylor and Emma Jane Owens, maternal grandmother of author; story about the calendar and Hartford's name.
2. "Hartford C. & Betty (Mulliner) Taylor," *Mt. Vernon (KY) Signal*, date unknown, original clipping saved by Betty Mulliner Taylor.
3. *Doc Hopkins and Karl and Harty of the Cumberland Ridgerunners: Mountain Ballads and Home Songs*, (M. M. Cole Publishing, Co., Chicago, IL, 1936).
4. Marriage Certificate, Hartford Conn Taylor and Betty Josephine Mulliner, 9 Nov 1928, Knox County, IL; original privately held by W. H. Taylor; scanned copy provided to Linda F. McCauley, 2003. "U.S., Social Security Applications and Claims Index, 1936–2007," database, *Ancestry* (<https://www.ancestry.com/search/collections/60901> : accessed 7 Jan 2022), Betty Mulliner Taylor, SSN 319-32-5374; from Social Security Applications and Claims, 1936–2007; parents names.
5. "Betty Mulliner, Hartford Taylor, Married Friday," unidentified newspaper, probably in Galesburg, IL, date unknown, original clipping saved by Betty Mulliner Taylor.
6. "U.S., Social Security Applications and Claims Index, 1936–2007," Betty Mulliner Taylor, SSN 319-32-5374.
7. "Hartford C. & Betty (Mulliner) Taylor," *Mt. Vernon Signal*, date unknown.
8. "Betty Mulliner, Hartford Taylor, Married Friday," unidentified newspaper, date unknown.
9. Charles K. Wolfe, *Classic Country, Legends of Country Music* (New York, New York: Routledge, 2001); p. 110.
10. Paul Kingsbury, editor, *The Encyclopedia of Country Music*, compiled by staff of the Country Music Hall of Fame and Museum (New York: Oxford University Press, 1998); p 121 & 275.
11. "Hartford C. Taylor Buried in Illinois, *Mt. Vernon (KY) Signal*, 31 Oct 1963; microfilm of *Mt. Vernon Signal*, Rockcastle County Public Library, Mt. Vernon.
12. "U.S., Social Security Applications and Claims Index, 1936–2007," database, *Ancestry* (<https://www.ancestry.com/search/collections/60901> : accessed 7 Jan 2022), Betty Conn Taylor, SSN 346-22-6808; from Social Security Applications and Claims, 1936–2007.
13. Name and personal information withheld for privacy.
14. "Hartford C. Taylor Buried in Illinois, *Mt. Vernon Signal*, 31 Oct 1963. Betty died on 19 February 2002 in Knoxville, Knox County, Illinois and was also buried in Millburn Cemetery. ("U.S., Social Security Applications and Claims Index, 1936–2007," Betty Mulliner Taylor, SSN 319-32-5374; death date. Find A Grave (<https://www.findagrave.com> : viewed 7 Jan 2022), memorial 146344761, for Betty Mulliner Taylor, (Millburn Cemetery, Wadsworth, Lake County, IL), no image, information from obituary published 21 Feb 2002, Peoria Journal; location of death and burial.
15. "U.S., Social Security Applications and Claims Index, 1936–2007," Betty Mulliner Taylor, SSN 319-32-5374; death date. *Find a Grave* (<https://www.findagrave.com> : viewed 7 Jan 2022), memorial 146344761, for Betty Mulliner Taylor, (Millburn Cemetery, Wadsworth, Lake County, IL), no image, information from obituary published 21 Feb 2002, Peoria Journal; location of death and burial.
16. Emma Ewers Taylor Hopkins, "Our Family History" (1969-1977); p. 15.
17. *Find a Grave* (<https://www.findagrave.com> : viewed 7 Jan 2022), memorial 17324984, for Betty Conn Finch, (Knoxville Cemetery, Knoxville, Knox County, IL), digital image, 6 Jan 2007, Marsha.



# Anna Rose Taylor



Left: Anna Rose & John; Center: Anna Rose; Right: Anna Rose

Anna Rose was the baby of the family. Her closest sibling, Hartford, was 13 years old when she was born on 10 June 1918 in Mt. Vernon, Kentucky.<sup>1</sup> For several years, starting in the mid-1930s, she lived with Hartford and his family in Chicago and attended high school. During that time, she returned home to Mt. Vernon during summer breaks. After graduation, she went to work for a candy factory for a while before returning to Mt. Vernon to live.<sup>2</sup>

Anna Rose married Emery Holt Chesnut on 3 Feb 1947 in Cook County, Illinois.<sup>3</sup> She borrowed a dress pattern from her niece, Faye, and made a light blue wool dress for her wedding.<sup>4</sup>

Holt was born on 10 August 1904 in Knox County, Kentucky to John Jacob Chesnut and Tabitha Humfleet.<sup>5</sup> He was the uncle of Aubrey Chesnut who married Anna Rose's niece, Edna Hopkins.<sup>6</sup> Anna Rose and Holt made their home in Detroit, Wayne County, Michigan.<sup>7</sup>

Anna Rose and Holt's son, John Hartford, was born in Detroit on 19 August 1948.<sup>8</sup> When John was very young, Anna Rose returned to Mt. Vernon to live with her parents. They lived in the other side of the duplex on West Main Street where Emma Jane and John lived, which had a connecting door in their living rooms.<sup>9</sup>

Anna Rose and Holt never divorced, even though they did not live together for years. About 1964, she and John returned to Detroit to live with him.<sup>10</sup>

Anna Rose suffered a heart attack while hospitalized for hiatal hernia surgery.<sup>11</sup> She died on 17 July 1976 in Ann Arbor, Michigan.<sup>12</sup> She was buried in Milburn Cemetery in Wadsworth, Lake County, Illinois, beside Hartford.<sup>13</sup>

Holt died on 22 February 1993 in West Branch, Michigan, and was buried in Hutchins Cemetery in Bailey Switch, Knox County, Kentucky.<sup>14</sup>

John died on 22 March 2015 in Murrieta, California.<sup>15</sup> His final resting place is unknown.

## Endnotes for Anna Rose Taylor

1. Emma Ewers Taylor Hopkins, “Our Family History” (KY, Loyall, 1969-1977), scanned copy of fill-in-the-blanks family history privately held by Linda F. McCauley, Mt. Vernon, KY; Linda is Emma’s granddaughter; p. 14, birth dates for Anna Rose & Hartford.
2. Uta Faye Hopkins McCauley, daughter of Elmer D. Hopkins and Emma E. Taylor, mother of author.
3. Cook County, IL, “Cook County Genealogy,” database, *Genealogy Online* (<http://www.cookcountygenealogy.com/> : accessed 3 Mar 2010), Anna Rose Taylor and Emery H. Chestnut, 3 Feb 1947, #1954006; index citing marriage records of Cook County (no longer available online).
4. Uta Faye Hopkins McCauley, daughter of Elmer D. Hopkins and Emma E. Taylor, mother of author.
- 5 “U.S., Social Security Applications and Claims Index, 1936–2007,” database, Ancestry (<https://www.ancestry.com/search/collections/60901> : accessed 1 Jan 2022), Emery Holt Chesnut, SSN 375-05-7544; from Social Security Applications and Claims, 1936–2007.
6. Uta Faye Hopkins McCauley, daughter of Elmer D. Hopkins and Emma E. Taylor, mother of author.
7. “Holt & Anna Rose (Taylor) Chesnut,” probably from *Mt. Vernon (KY) Signal*, date unknown, scanned clipping held by Linda F. McCauley, Mt. Vernon, KY, 2003, original saved by Hartford Taylor.
8. Emma Ewers Taylor Hopkins, “Our Family History” (1969-1977). p. 14.
9. Uta Faye Hopkins McCauley, daughter of Elmer D. Hopkins and Emma E. Taylor, mother of author.
10. Emma Ewers Taylor Hopkins, daughter of John Cook Taylor and Emma Jane Owens, maternal grandmother of author.
11. Emma Ewers Taylor Hopkins, “Memoir” (1977).
12. Funeral Card for Anna R. Chesnut, Strang Funeral Home, Antioch, IL; copy privately held by Linda McCauley, Mt. Vernon, KY, provided by W. H. Taylor.
13. Emma Ewers Taylor Hopkins, “Our Family History” (1969-1977). p. 47, cemetery name and location. Emma Ewers Taylor Hopkins, daughter of John Cook Taylor and Emma Jane Owens, maternal grandmother of author; buried next to Hartford.
14. “Michigan, U.S., Death Index, 1971-1996,” database, *Ancestry* (<https://www.ancestry.com/search/collections/3171> : accessed 26 Dec 2008), 1993, Emery H. Chesnut; from Michigan Dept. of Vital and Health Records, Michigan Death Index, Lansing; death date and location. *Find a Grave* (<https://www.findagrave.com> : viewed 1 Jan 2022), memorial 20111765, for Emery H. “Holt” Chesnut, (Hutchins Cemetery, Bailey Switch, Knox County, KY), digital image, 26 Jun 2007, by Juel.
15. “John Hartford Chesnut, 1948-2015,” *Legacy.com* (<http://www.legacy.com/obituaries/> : accessed 14 Sep 2017); published by Press-Enterprise (Riverside, CA), 22 Apr 2015.